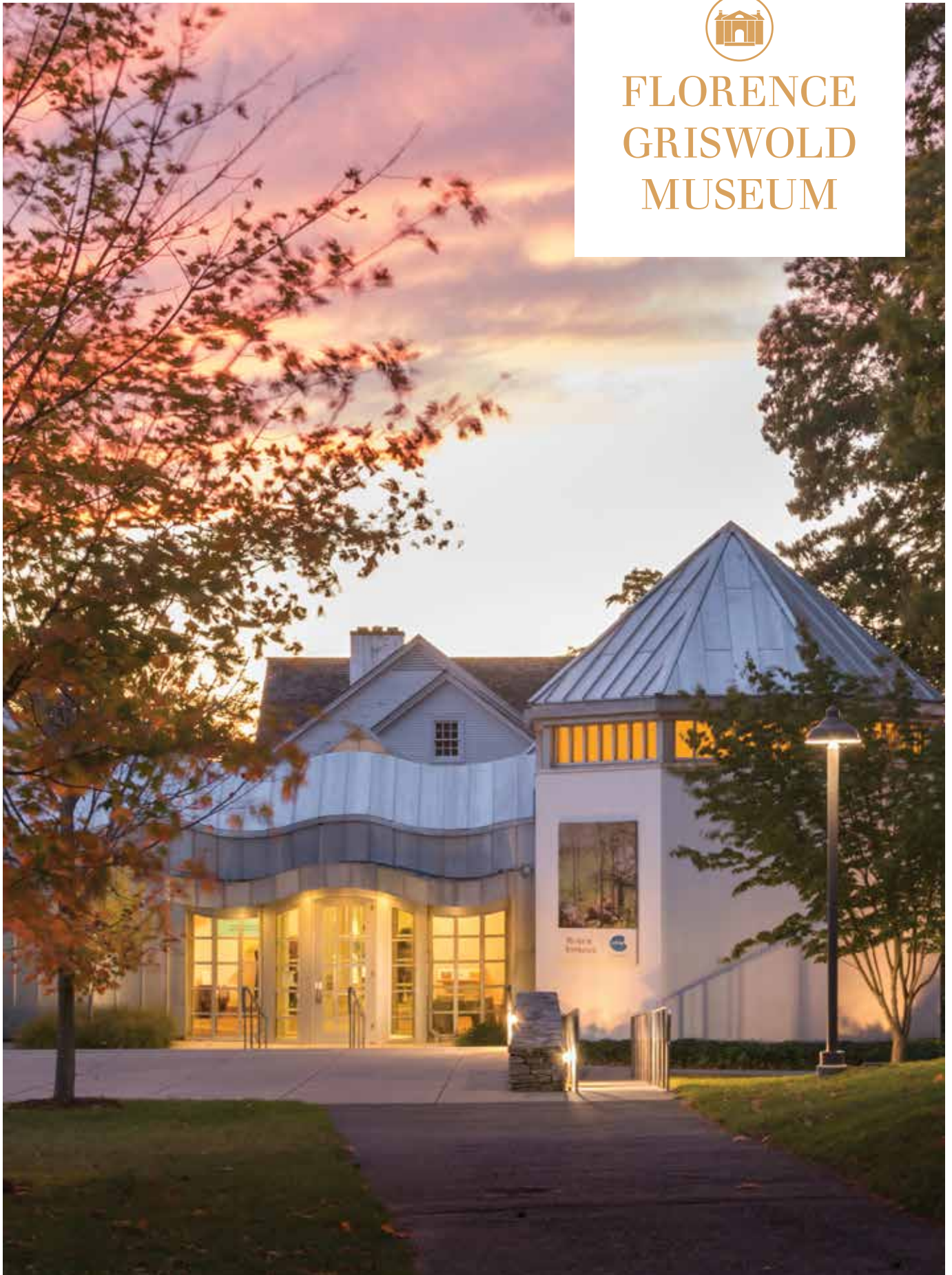




FLORENCE GRISWOLD MUSEUM



FLORENCE GRISWOLD MUSEUM ANNUAL REPORT 2018



PRESIDENT'S MESSAGE

2

ANNUAL REPORT 2018

BY ANY MEASURE 2018 was a memorable year for the Florence Griswold Museum, celebrating both the extraordinary achievements of Jeff Andersen throughout his four decades as Director, as well as the auspicious arrival of Becky Beaulieu as our remarkably creative and energetic new Director. What a privilege it has been to serve as President of the Museum's outstanding Board of Trustees during this year of continued growth and success, and what a pleasure it has been to work in partnership with our visionary new Director. I have watched with admiration as Becky quickly and effectively assumed her leadership role at the Museum and in the community, working with our talented and tireless staff to make the Museum a source of inspiration for local, regional, and national visitors through engaging exhibition and outreach programs, attracting unprecedented numbers of new and supportive audiences.

2018 was also a year that marked the anniversaries of two major milestones in our history. The first was the 40th anniversary of the Museum receiving Accreditation from the American Alliance of Museums in 1978, making it among the first museums in America to meet the rigorous standards of the AAM Accreditation Program. Did you know that of the estimated 33,000 museums in the United States only 1,072 have earned this high honor? Further honor was brought to the Museum when Becky, a longtime AAM Accreditation Peer Reviewer, was named to a five-year term as one of only nine members the national AAM Accreditation Commission, the only representative from a museum in New England. 2018 also marked the 25th anniversary of the Secretary of the Department of Interior's designation of the historic 1817 Griswold House, known to us as Miss Florence's boardinghouse, as a National Historic Landmark, the highest distinction awarded by the National Park Service.

While much has been accomplished in the year just past, untold challenges and opportunities lie before us in the year ahead. We have never been better poised to share our treasures with the public. The uniting of the best of the old with the best of the new offers countless opportunities as we reclaim and reinterpret our historic landscape, add to our superb permanent collection, and provide programs to make our museum one of America's most innovative and engaging museums of art and history.

I am grateful for the imaginative and highly professional work of our entire extraordinarily capable staff, the dedication and countless hours of service of my fellow Board members and legions of volunteers, and the devoted support of each of our members and donors. We are counting on all of you to continue your support and service to our great museum as we work together to accomplish the ambitious goals that will emerge from our strategic planning process. With your help, I am certain that we will sustain our momentum, attain our goals, and maintain the highest standards of the museum profession in all we do to preserve and protect the exquisite landscape, historic buildings, and extraordinary collections entrusted to our care—always striving to share them with our ever-expanding audience of visitors from around the corner and throughout the world.

David W. Dangremond
President

Cover photo credit: Derek Hayn



2018 WAS A YEAR OF TRANSITION and evolution at the Florence Griswold Museum, a moment to be remembered and celebrated. Following Jeff Andersen's retirement in February after four extraordinary decades as Director, my arrival was humbling and gratifying, with our Museum community offering unwavering encouragement and a hearty welcome. As I reflect on my first year at the Museum, I am in awe of the support you have offered, insights you have shared, and warmth you have imparted. In turn, I am pleased to have the opportunity to chronicle all that has transpired at the Museum in our first year together.

Our exhibition program in 2018 illuminated the strengths of our permanent collection, beginning with *Pen to Paper: Artists' Handwritten Letters from the Smithsonian's Archives of American Art*, which explored letter-writing as an aesthetic expression of creativity and created a wholly unique lens through which to view the lives of some of our best-known American artists such as Thomas Eakins and Georgia O'Keeffe. The installation at the Florence Griswold Museum augmented the display of letters from the Smithsonian Archives of American Art with selections from our permanent collection as well as the allied exhibition of Lyme Art Colony correspondence *P.S. Letters from the Lyme Art Colony*, which greatly enhanced the original exhibition. Summer's *Art and the New England Farm* similarly highlighted the role of artistry in our everyday world, tracing the story of the New England farm from its early establishment and dominance through the advent of industrialization until today's rise of niche farms. The addition of Judy Friday's photography from her publication entitled *A Year at Tiffany Farms* situated the exhibition in a modern, regionally relevant context that resonated with many of our visitors. The 2018 exhibition program concluded with *Paper Trail: American Prints, Drawings, and Watercolors*, a rare opportunity to view our collection of works on paper that followed the "paper trail" of the Museum's works on paper from the Colonial era until the present. With special interest in artists' changing approach to the creative process, *Paper Trail*, like all of our 2018 exhibitions, encouraged our visitors to ponder motivations for and execution of artistic expression, the role of the artist in representing the surrounding world, and the singular perspective of the Museum in telling such stories.

In addition to exhibitions that shed light on the potency and breadth of our collection, our programming continued the trajectory of excellence for which the Museum has become known. We hosted guest lecturers from institutions such as the Smithsonian Archives of American Art and Clark University, and on topics ranging from forensic handwriting analysis to the history of hops and the brewing industry. Workshops on topics such as botanical drawing, film screenings in collaboration with the Katharine Hepburn Cultural Arts Center, Winter Studies, and a variety of other offerings create multiple avenues by which we welcome our audiences. We are pleased to share that our engagement figure has increased 5% in 2018, growing to just over 80,500 visitors and outreach recipients. In addition to our admirably supportive member base, which remains robust at just under 3,000 memberships, we also hosted a large number of non-member attendees that demographically split almost evenly between children and student visitors (37%), adults (33%), and seniors (30%). Such numbers are undoubtedly aided by the enthusiastic response to this year's *Wee Faerie Village*, which garnered just over 15,000 visitors, as well as the expansion of the Museum's *Magic of Christmas*, which incorporated extended family programming and our highest attended Christmastime Tea season on record.

The Museum staff, trustees, and community have made our first year together an exceptionally positive one. We look forward to an exciting future abundant with insightful exhibitions, wonderfully engaging and memorable programs and events, and innovative new interpretation that embraces our artistic, cultural, and natural worlds.

Rebekah Beaulieu
Director

THE MUSEUM'S FISCAL YEAR 2018 ended with expenses very close to budget. Public and private grants and business support both met budget, the Annual Benefit and Auction exceeded expectations, and memberships finished ahead of the previous year. Additionally, activities including the Museum Shop, facility rentals, Café Flo, Midsummer Festival, GardenFest, *Wee Faerie Village*, Winter Studies, and holiday teas all contributed to earned income, which made up almost a quarter of the budget. A decline in admission revenue due to frigid weather in the first quarter, expenses incurred from the leadership transition, and a shift in projected contributed income resulted in an operating deficit.

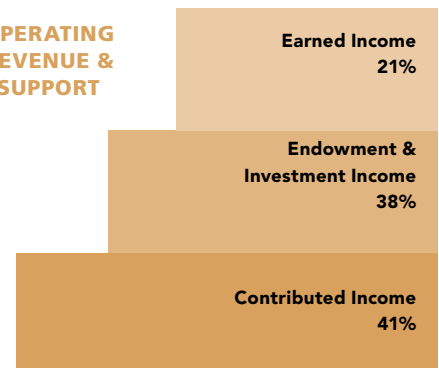
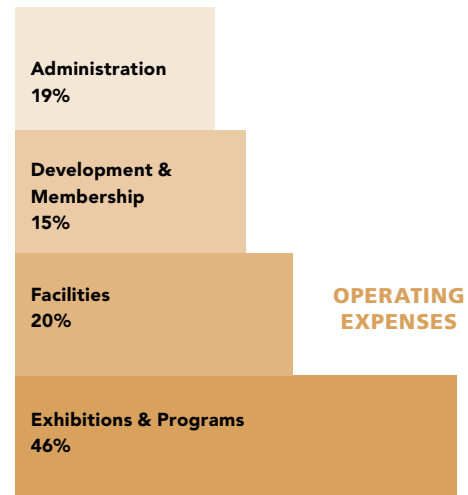
The Museum's operating costs have remained consistent over the past several years. Administration, Development, Education and Visitor Services were on a par with previous years. There was an increase in Facilities expenses as a result of water system repairs and replacement of copper piping. Curatorial expenses vary more than other departments from year to year according to the nature of the exhibition schedule. Costs for 2018 were less than the prior year, however, because the exhibitions were primarily organized around the Museum's collection rather than loans.

2018 was a down year for the stock market and the Museum's endowment and other restricted funds invested for long-term purposes reflected this with the market value down 6% to \$17.2 million at December 31, 2018.

The Museum has weathered the last few years of economic uncertainty through the crucial support of visitors, members, and contributors, and the Finance Department remains dedicated to managing resources to annual projected revenue and ensuring the ongoing stability of the Museum.

Fred Cote
Director of Finance

	2018	2017
OPERATING SUPPORT AND REVENUE		
Annual Giving	311,247	365,694
Contributions	88,168	134,958
Membership Dues	198,573	184,596
Business Support	98,315	88,660
Foundation & Government Support	125,312	150,584
Fundraising Events	234,080	242,606
Visitor Services (Admissions and Shop)	400,164	410,091
Education/Public Programs	131,382	127,688
Endowment and Other Investment Income	975,412	859,877
TOTAL OPERATING SUPPORT AND REVENUE	2,562,652	2,564,754
OPERATING EXPENSES		
Administration	509,952	398,397
Development and Membership	403,601	375,636
Technology	44,354	44,463
Facilities	488,283	453,152
Visitor Services & Marketing	495,860	482,201
Education	380,171	382,477
Curatorial	368,862	405,004
TOTAL OPERATING EXPENSES	2,691,084	2,541,331
NET OPERATING INCOME	(128,432)	23,423





George Glenn Newell (1870–1947)
Salt Haying, Old Lyme (detail), 1906

ADDITIONS TO THE COLLECTION

Gifts, bequests, and purchases of significant objects are essential to the growth of the Museum's collection. All of the objects outlined below have added depth to the collection, enabling the institution to build on its commitment to fully portray the art and history of the region. The Museum is grateful for the generous gifts received this year and every year.

William Henry Howe (1846–1929)

Repose, September Days in Normandy (In the Meadow), 1888-89

Oil on canvas, 36 1/4 x 51 1/4 inches

Signed, inscribed, and dated: "Willim [sic] H. Howe/18 Paris 89"

lower right; titled, inscribed, dated, and monogrammed "-Repose-/
 September days/in Normandy/1888 WHH" on reverse

Purchase, David W. and Mary S. Dangremond Acquisitions Fund, 2018.1

Norman Ives (1923-1978)

L-E, 1970

Color screenprint, 21 1/4 x 22 inches

Unsigned and unnumbered

Gift of Charles T. Clark, 2018.2

Edward C. Volkert (1871–1935)

Misty Morning, ca. 1920

Oil on canvas, 12 x 16 inches

Gift of Remak Ramsay, 2018.3

George Henry Durrie (1820–1863)

Winter in the Country: A Cold Morning, 1864

Two-color lithograph with handcoloring, 18 5/8 x 27 inches

Purchase, 2018.4

Matilda Browne (1869–1947)

Still Life with Flowers, ca. 1925

Oil on canvas, 36 x 30 inches

Signed lower right

Gift of V.J. Dowling, 2018.5

James Daugherty (1887–1974)

Six original Futurist watercolors, 1914–15

Watercolor, various sizes

Gift of the Friends of James Daugherty Foundation, Inc., 2018.6.1-6

Everett L. Warner (1877–1963)

Camouflage Design for USS Santa Louisa, Port Side, Type 14,

Design E (no. 57), 1918

Lithograph, 12 x 30 inches

Gift of the Friends of James Daugherty Foundation, 2018.6.7

George Glenn Newell (1870–1947)

Salt Haying, Old Lyme, 1906

Oil on canvas, 30 x 40 inches

Signed and dated lower left

Purchase, 2018.7

Breta Longacre (1887–1923)

Miss Florence's House Seen from the Back, ca. 1916

Oil on canvas, 20 x 30 inches

Gift from three of Breta's grandchildren in honor of her daughter

Breta Eleanor DelMar Revill, 2018.8

Daniel Huntington (1816–1906); engraved by Charles Burt (1823–1892)

Printed by J. Dalton, published for the American Art-Union

The Signing of the Death Warrant of Lady Jane Grey, after

Daniel Huntington, 1848

Engraving

Gift of Jane Ross Ludington, 2018.9

Caro Weir Ely (1884–1974)

11 Sketches and studies from the artist's estate

Mixed media, various sizes

Gift of Edward Deming Andrews, 2018.10.1-11

Fidelia Bridges (1834–1923)

Portfolio of 41 watercolor studies and 16 prints she owned

Gift of Judith A. Hayes in memory of Jean H. O'Connor and the

Chadwick Family of Salem, Massachusetts, 2018.11.1-57



Gretna Campbell, *Untitled [Landscape]*,
ca. 1970s–80s



Lewis Cohen, *Château de Chinon*, ca. 1912–15



William Bailey, *Still Life*, 1987

Armin Landeck (1905–1984)
Cornwall Bridge Station, 1936
Drypoint, 5 3/4 x 10 inches (image)
Signed "Landeck" at lower right of image
Gift of Charles T. Clark, 2018.12

Harry L. Hoffman (1874–1966)
Queen Trigger Fishes, n.d.
Watercolor on board, 15 x 11 1/2 inches
Gift of the Estate of Mrs. Patricia Burr Bott, 2018.13.1

George Brainerd Burr (1876–1939)
Morocco-Holy Men, n.d.
Watercolor on paper, 5 x 7 inches
Gift of the Estate of Mrs. Patricia Burr Bott, 2018.13.2

George Brainerd Burr (1876–1939)
River Scene, n.d.
Oil on panel with second image on reverse, 7 3/4 x 9 3/4 inches
Gift of the Estate of Mrs. Patricia Burr Bott, 2018.13.3ab

Judy Friday (b. 1957)
Dry Cows by the Pond, from the series *A Year at Tiffany Farms*, 2003, printed 2018
Archival inkjet print, 20 x 30 inches
Gift of the artist, 2018.14.1

Judy Friday (b. 1957)
Rocky Field, from the series *A Year at Tiffany Farms*, 2003, printed 2018
Archival inkjet print, 16 x 20 inches
Gift of the artist, 2018.14.2

J. Alden Weir (1852–1919)
Washington Arch no. 2, ca. 1887-1893
Etching, 7 x 4 7/8 inches
Purchase, 2018.15

Lewis Cohen (1857–1915)
Chioggia, 1912
Oil on board, 12 x 16 inches
Unsigned, dated May 17/12, lower right
Purchase, 2018.16

Lewis Cohen (1857–1915)
Château de Chinon, ca. 1912–15
Oil on canvas, 30 x 38 inches
Signed l.r.: Lewis Cohen
Purchase, David W. and Mary S. Dangremond Acquisitions Fund, 2018.17

Eleanor Lathrop Sears (1899–1988)
Portrait of William Marvin Ely, ca. 1940
Pastel on paper, 19 1/2 x 15 1/4 inches
Signed l.r.: Eleanor Lathrop Sears
Gift of the Estate of Kenneth D. Plimpton, 2018.18

William Bailey (b. 1930)
Still Life, 1987
Etching, 8 1/2 x 7 inches
Signed, dated l.r. on sheet; numbered 6/50 in pencil, l.l.
Gift of Charles T. Clark, 2018.19



Judy Friday, *Rocky Field*, printed 2018



Matilda Browne, *Still Life with Flowers*, ca. 1925



William Henry Howe, *Repose, September Days in Normandy (In the Meadow)*, 1888-89

Gretna Campbell (1922–1987)
Untitled [Landscape], ca. 1970s–80s
Oil on canvas, 47 7/8 x 41 7/8 inches
Gift of Nancy Friese in honor of Laura Friese Goforth and Henry Finkelstein, 2018.20

William Chadwick (1879–1962)
The Orange Fan, ca. 1906
Oil on canvas, 26 1/8 x 20 1/8 inches
Florence Griswold Museum, partial gift of the Everette James Family, 2018.21

Unidentified maker
Folding easel owned by Edward C. Volkert
Wood, metal
Gift of Ruth Middleton, David Kleeman and Family, 2018.22

Sol LeWitt (1928-2007)
Yarmulke, designed 2001/2011; printed 2018
Leather with digital print and blue fabric trim, 5 1/4 inches diameter
Gift of Ellen and Mark Maloney, 2018.23

ADDITIONS TO THE ARCHIVES AND LIBRARY

Seven art books and exhibition pamphlets. Gift of Charles T. Clark
Materials owned by Louis Paul Dessar, including a photo album of pictures from Giverny. Gift of the Estate of Allan Ely Plimpton, nephew of Louis Dessar

Three *New York Herald Magazine* section pages featuring illustrations by James Daugherty. Gift of John Solum

Photograph of Nelson C. White in Florence Griswold's Garden, ca. 1903. Gift of George and Betsy White

Transcripts of Nelson C. White lecture. Gift of George and Betsy White

Postcard—"Sketching Class in Lyme, CT." Gift of The New Britain Industrial Museum

Two Ledgers from the Old Lyme Inn: Hotel Register, 1944-1956, and Laundry Book, ca. 1931. Gift of Carolyn Wakeman

21 books about Camille and Lucien Pissarro. Gift of the Westport River Gallery

Scrapbook/Photo Album and publications relating to Louis Paul Dessar, Gift of the Estate of Allan Ely Plimpton, nephew of Louis Dessar

Postcard of Hotel Baudy in Giverny, Gift of Ann Burr Czepiel
Three volumes of Edward E. Salisbury and Evelyn McCurdy Salisbury, *Family Histories and Genealogies*. Gift of Geoffrey Paul

Wallet belonging to Robert Vonnoh. Gift of Captain and Mrs. Chip Seymour, Jr.

Books owned by Captain John Mather Chadwick. Gift of the Estate of Kenneth D. Plimpton

Photographs of Louis Paul Dessar and Elizabeth Dessar, ca. 1891. Gift of the Estate of Kenneth D. Plimpton

Two letters from Harry Hoffman to Henry C. White. Gift of George and Betsy White

LOANS TO OTHER INSTITUTIONS

Hartford Steam Boiler Inspection and Insurance Company, Hartford CT

Lyman Allyn Art Museum, New London, CT

New Britain Museum of American Art, New Britain, CT

Office of the Lieutenant Governor, Hartford, CT

EDUCATIONAL SERVICES

Educational services lie at the heart of the Museum's mission. "To foster the understanding of American art, with emphasis on the art, history, and landscape of Connecticut" is a goal that has touched thousands of visitors and educated students of all levels, abilities, and background both on and off site.



SCHOOL GROUPS

Alcott Elementary School, Wolcott
Ansonia Homeschool Group, Ansonia
A.W. Cox Elementary School, Guilford
Bearpath Elementary School, Hamden
Berlin High School, Berlin
Calvin Leete Elementary School, Guilford
Country Day School, Hamden
CELC-New Haven
Center School, Old Lyme
Charles Wright Elementary School, Wethersfield
Chester Elementary School, Chester
Connecticut College Art Students, New London
Deep River Elementary, Deep River
Dual Language & Arts Magnet School, Waterford
Experiential Learning Center, Branford
Emma Hart Willard School, Berlin
Fairfield Warde High School, Fairfield
Fishers Island School, New York
Flanders School, East Lyme
Friendship School, Waterford
Gallup Hill School, Ledyard
Goodwin Elementary School, Storrs
The Goodwin School, Saybrook
Haddam-Killingworth High School, Higganum
Hamden Middle School, Hamden
Hamden Hall Country Day, Hamden
Hamden Youth Services, Hamden
Hubbard Elementary School, Berlin
Independent Day School, Middlefield
Integrated Day Charter School, Norwich
ISAAC School, New London
Jeffrey Elementary School, Madison
John B. Sliney School, Branford
LEARN
Ledyard High School, Ledyard
Lillie B. Haynes Elementary School, Niantic
Lyme Consolidated School, Lyme
Melissa Jones Elementary School, Guilford
Mile Creek School, Old Lyme
Museum Academy, Farmington
Nathan Hale Middle School, Moodus
New London Adult Education, New London
New London Arts Magnet School, New London
New London Day Nursery School, New London

New London High School, New London
Nicole Chu Homeschool, Fairfield
Niantic Center School, Niantic
Northeast Academy, Mystic
Norwich Technical High School, Norwich
Old Lyme Middle School, Old Lyme
OLM PREP, Madison
Oswegatchie School, Waterford
Oliver H. Platt High School, Meriden
Our Lady of Mercy, Madison
Oxford Academy, Westbrook
Pleasant Valley School, South Windsor
Portland Middle School, Portland
Red Barn Pre-K, Clinton
RIGHT Homeschool, RI
Stafford Springs Middle School, Stafford Springs
St. Thomas Day, Middletown
St. Johns School, Saybrook
The Masters School, West Simsbury
The Joshua Center, Norwich
The Red Barn Pre-School, Clinton
The Sherwood School, Old Saybrook
Voluntown Elementary, Voluntown
West Greenwich High School, West Greenwich, RI
West Side STEM, Groton
Unquowa School, Fairfield

SCOUT GROUPS

Girl Scouts of Branford
Cub Scouts of Clinton
Brownie Troop of Groton
Girl Scouts of East Haven
Girl Scouts of Glastonbury
Girl Scouts of Guilford
Girl Scouts of Haddam
Girl Scouts of Hamden
Girl Scouts of Higganum
Brownies of Madison
Brownies of Middlefield
Girl Scouts of Milford
Brownies of Mystic
Girl Scouts of Sandy Hook
Girl Scouts of Stamford
Girl Scouts of Vernon

ADULT GROUP TOURS

Adams & Knight, Avon
Alain Picard Studio, Southbury
Armsmear of Hartford, Hartford

Bob Pompei, Charlestown, RI
Carew Travel, Atlanta, GA
Celebrate Connecticut, LLC, Easton
Cherry Brook Garden Club, Canton
Connecticut College, New London
Denver Art Museum, Denver, CO
Duncaster, Bloomfield
East Hartford Senior Citizens, East Hartford
Eastern CT State University, Willimantic
Encore of Wilton, Wilton
Endless Byways, Brookline & Newton, MA
Evergreen Garden Club, Killingworth
Evergreen Woods, North Branford
Fairfield University, Fairfield
Founders Hall, Ridgefield
Gilead Community Services, Middletown
Historical Society of Early American Decoration, Farmington
International Society of Lower Fairfield County, Stamford
Jerry Weiss Studio Class, Chester
Lakeville Garden Club, Lakeville, MA
League of Democratic Women, Clinton
Lords Hill Studio, Stonington
LYDSI Travel Club, Rockville Centre, NY
Lyme Academy of Fine Arts, Old Lyme
Masonicare at Ashlar Village, Wallingford
Middletown Senior Center, Middletown
Morris Cove Garden Club, New Haven
Phileta's Group, Southbury
Plainville Senior Center, Plainville
Pomperaug Woods, Southbury
Prospect Senior Center, Prospect
Queens Botanical Garden, Flushing, NY
Sea Kayakers, Guilford
SECT Art Teachers' Professional Development Day
SECT Social Studies Teachers
Simsbury Library Group, Simsbury
Smith College Club, North Hampton, MA
South County Women's Club, West Kingston, RI
Southern CT State University, New Haven
Stonington Garden Club, Stonington
Timeless Tours, Killingworth
Tunxis Community College, Farmington
United Methodist Women's Group, New Canaan
Valerie Larko's Painting Class, New Rochelle, NY

Veronica Soell's Painting Class, Guilford
 Vistage, Old Saybrook
 Wesleyan Institute for Lifelong Learning,
 Middletown
 Williams School, New London
 Woodbury Senior Center, Woodbury

PROFESSIONAL DEVELOPMENT GROUPS

Southeastern Connecticut Art Teachers' Professional Development Day
 Pleasant Valley Teachers' Development Day

OUTREACH

ACE Afterschool series Mile Creek School, Old Lyme
 ADA/Historic Deerfield Antiques Show, Hartford
 BP Learned Winter Art Series, New London
 Berkshire Mountains Faerie Festival, Adams, MA
 Big E, Springfield, MA
 Boston Flower Show, Boston, MA
 Camp Clio two painting nights at Camp Claire, Lyme
 Center School winter class, Old Lyme
 Connecticut College Arboretum four visits, New London
 Connecticut Flower Show, Hartford
 Connecticut Library Association Annual Conference, Danbury
 Dudley Farm Fairy Festival, Guilford
 Dudley Farm painting class, Guilford
 Emma Hart Willard School five-day program, Berlin
 Essex Meadows film and art series, Essex
 Fishers Island School, NY
 Goodwin School camp fair, Old Saybrook
 Hubbard Elementary schoolwide two-day program, Berlin
 Lyme Consolidated two-day program, Lyme
 LYSB camp fair, Old Lyme
 Mile Creek School winter class Old, Lyme
 Mystic-Noank Library class, Mystic
 Naval Base adult class, Groton
 Naval Base Library Faerie project, Groton
 Naval Base family night, Groton
 New London Adult Ed-Art Series, New London
 New London Day Nursery School series, New London
 Redding Elementary schoolwide two-day visit, Redding

Salem after school art series, Salem
 Sunshine Kids/Sails up for Cancer paint class, Mystic

PROFESSIONAL PRESENTATIONS BY STAFF

Rebekah Beaulieu, Director

Investing in Your Financial Literacy, New England Museum Association Workshop, Portsmouth, NH

CAS 69th Annual Summer Juried Exhibition, Clinton Art Society, Clinton

Fearless Finance and Fundraising, Connecticut League of History Organizations, Old Lyme

The Florence Griswold Museum: Past, Present, Future, Niantic Rotary Club

Succession Planning: Is Your Organization Prepared?, New England Museum Association Annual Conference, Stamford

The Leadership Partnership: How to Build a Strong Relationship with Your Board Chair, New England Museum Association Annual Conference, Stamford

Break the Budget Bubble: How to Build and Read Budgets, New England Museum Association Annual Conference, Stamford

Nonprofit Financial Management, Indiana Historical Society, Indianapolis, IN

CEO Confidential, Indiana Historical Society, Indianapolis, IN

Tammi Flynn, Director of Marketing and Matthew Greene, Director of Visitor Services

From Crazy to Catalyzing: Taking a Chance on a New Idea, Southeastern Cultural Coalition Thrive! Conference, Mashantucket

Amy Kurtz Lansing, Curator

Art and the New England Farm, Mystic & Noank Library, Mystic
Discovering our Founders Series: Robert Hogg Nisbet, Kent Art Association, Kent.

The Art of Preservation: The Women Behind Historic Artists' Homes and Studios of New England, New England Museum Association Annual Conference, Stamford

Julie Garvin Riggs, Museum Educator

Museums as Partners in Place-Based Learning, 48th Annual Northeast Regional Conference on the Social Studies, Hartford

Film Viewing and Q and A: *The Artist's Garden and American Impressionism*, Essex Meadows Retirement Community, Essex

Film Viewing and Q and A: *Cézanne: Portraits of a Life*, Essex Meadows Retirement Community, Essex

David D.J. Rau, Director of Education & Outreach

Visiting Instructor for *AHI 284: House Museums*, Connecticut College, New London

Presentation: *SEE/change: Using Art to Teach History*, Alan Marcus' Teacher Education Program, UCONN

Power Session Presentation: *SEE/change: Lessons Learned in Developing Online Social Studies Materials*, 48th Annual Northeast Regional Conference on the Social Studies, Hartford

My brother always gets bored at art museums but we never wanted to leave this one. Peaceful and amazing experiences here! Always something so cool to look at.

A young visitor named Ashley



2018 GIFTS AND GRANTS

The Museum is most grateful to this wonderfully diverse range of individuals, foundations, businesses, and government agencies whose committed support equips us to achieve our mission and make great things possible here.



GRANTS

Community Foundation of Eastern CT
Community Foundation of Middlesex County,
Ellsworth & Virginia Grant Fund
Connecticut Humanities
Department of Economic and Community
Development, Connecticut Office
of the Arts
Frank Loomis Palmer Fund
Institute of Museum & Library Services
National Endowment for the Arts
Robert F. Schumann Foundation
Rudolph & John Dirks Fund
Town of Old Lyme

SPONSORS

All Pro Automotive
Bank of America
Benchmark Wealth Management
Bouvier Insurance
Centerbrook Architects & Planners, LLC
Connecticut Cottages & Gardens
Guilford Savings Bank
Mr. & Mrs. Frank W. Hamilton, III
The Hartford Steam Boiler Inspection &
Insurance Co.
Imagineers, LLC
Infiltrator Water Technologies
Pasta Vita
Pfizer Inc.
Mr. & Mrs. M. David Sherrill
Venu Contemporary Culture Magazine
Wilber & King Nurseries
WSHU Public Radio Group

ENDOWED FUNDS

The Jeffrey Andersen Fund for Excellence
Dorothy Clark Archibald Acquisition Fund
Sally Bill Children's Education Fund
The Betty M. Challgren Education Fund
The David W. & Mary S. Dangremond
Acquisitions Fund
Fehrer Family Fund
The Yale Kneeland Object Conservation Fund
Elizabeth Matthews Hubbard Education Fund
Sali Godard Riege Educational Fund
Lelan F. Sillin, Jr. Education Endowment Fund
The Nika P. Thayer Exhibition &
Publication Fund
Thayer Sanderson Docent Fund
Samuel Thorne Memorial Lecture Fund

Wilson Wilde Art Conservation Fund
The Arden & Millicent B. Yinkey
Exhibition Fund

ACQUISITION FUND

Charles T. Clark
Ms. Helen Kriebler

EXHIBITION FUND

Maxwell & Sally Belding
The Vincent Dowling Family Foundation
Mr. & Mrs. Jeb Embree
Mary Farrell, The Howard Gilman Foundation
Mr. & Mrs. J. Geddes Parsons
William E. Phillips & Barbara Smith
Nelson Holbrook White
William Blunt White

SPECIAL PURPOSE GIFTS

Anonymous
Mr. Andy Baxter
Maxwell & Sally Belding
Chester Kitchings Family Foundation
Charles T. Clark
David W. Dangremond
Mary S. Dangremond
Don & Sue Joffray
John & Kelly Hartman Foundation
Roy & Deborah Moore
Mr. & Mrs. J. Geddes Parsons
Mr. & Mrs. John F. Pritchard

In Honor of Bette & Ken Taylor's 50th Anniversary

Sue & Ed Aberbach
Patsy Kumekawa
Mr. Thomas Soboleski
Mr. & Mrs. George Valliere
Priscilla Bollard Wilder

GIFTS IN KIND

Andrew Rubenoff: Design
Art Emporium
Artisan Framing & Gallery
Chase Canopy
Christie's
Deep River Jewelry Design
Fallon & Wilkinson, LLC
Tammi Flynn
The Frame Shop on Wall Street
Julia Balfour, LLC
Julie Garvin-Riggs

Minuteman Press
The Paint Shop, Inc.
Pough Interiors
Frank Racette
Jane Rapport
Lisa Reneson
Erica Tannen
Shoreline Framing
The Wall Street Gallery

MATCHING GIFTS

Aetna Foundation, Inc.
Amica Companies Foundation
Bank of America
Charter Oak Federal Credit Union
Dominion Foundation
Eaton
GE Foundation
Goldman Sachs
Hanover Insurance Group
IBM
Mohegan Sun
Norfolk Southern Foundation
Pfizer Foundation
Rockefeller Financial Service, Inc.
Sallie Mae
Travelers Foundation Community
Action Awards
United Technologies

MEMORIAL GIFTS

In Memory of Barbara Gustafson
Charles T. Clark

In Memory of Joan Pacelle
Rosemary Czuchra

In Memory of Eleanor Revill
Janice Bilodeau
Andrew Longacre, Jr. & Virginia Longacre
Marian & Bruce McCart

LIEUTENANT RIVER SOCIETY, FOUNDED 1993

Our deepest thanks to the following donors who have included the Museum in their estate plans.

Anonymous
Jeffrey W. Andersen & Maureen McCabe
Dorothy Archibald †*
Alice T. Barnwell †

Rufus Barringer †*
Andy Baxter
Rudolph H. J. Bergmans & Ann B. Lane
Mr. & Mrs. Charles R. Berry
Mr. & Mrs. Rudolph F. Besier
Sally J. Bill †
Todd Blumenkopf †
Richard H. Booth
Mr. & Mrs. Wilson G. Bradford
Mr. † & Mrs. Howard D. Brundage †
Edward W. Bush, Jr.
Jonathan D. Carlisle
Betty M. Challgren
Mr. † & Mrs. Valentine B. Chamberlain, III †
Jane Chesnutt
Charles T. Clark
Jonathan L. Cohen
Patricia & Wayne Coon
Anthony & Ann Cooper
Mary E. Copp †
Sara Twigg Crawford †*
Carley Cunniff †
Rose Katherine Cushman †
Mr. † & Mrs. Laci de Gerenday †
Mr. † & Mrs. Roger Dennis †
Albert † & Marianne Dock †
Grace W. Ellsworth †
Janet Eltinge
Mr. & Mrs. Jeb N. Embree
Catherine † & Elizabeth Fehrer †
Margaret Fisher †
John V. Frank
Mrs. W. Deming Goodale, Jr. †
Mr. & Mrs. William Grabe
Ellsworth † & Virginia Grant †
Mary Thomas Gray †
Mr. † & Mrs. Frank Hamilton, Jr. †
Jean Harris †
Mr. † & Mrs. John W. Hartman †
Mrs. Theodore Hillhouse
Paul & Linda Holt
Mary Janvrin †
Francis E. Jarrabeck
Gloria L. Johnston †
Dr. David & Marcia Kalayjian
Mr. † & Mrs. Richard G. Kehoe †
James & Hedy Korst
Mr. † & Mrs. Robert H. Krieble †
Hildred H. Lasser †
George Lay †*
Thelma J. Levin †
Curly Lieber
Townsend & Jane Ludington
Ron & Joanne † Luich
John A. & Carol McKinney, Jr.
Mr. † & Mrs. S. Van Vliet Lyman
Mr. & Mrs. Clement C. Moore, II
Deborah Moore
John & Heidi Niblack
Victoria Nott
Mr. † & Mrs. John H. Noyes †
Jephson † & Betty Chadwick O'Connell †
Dorothy Patee †
Stephen † & Marilyn Percy
Arthur Phelan †
William E. Phillips † & Barbara Smith*
Mr. & Mrs. David Preston
Charles Price †*
John & Lee Pritchard
Mr. & Mrs. Arthur Reichenbach*
Ellie Revill †

Cleaveland Rice, Jr. †*
Mr. & Mrs. John H. Riege
Mr. † & Mrs. David W. Sargent †
Robert F. Schumann †
Edith Mary Scott †
Alex † & Sondra Smith †
Gregory † & Anna Smith †
Alan † & Barbara Spargo
Alix & Janie Stanley
Mrs. John L. Thayer †
Mr. & Mrs. Samuel Thorne, Jr.
Mrs. Samuel Thorne †
Tony † & Sandy Thurston
Genevieve Tripp †
Helen B. Uebelacker †
Mark & Roberta Velez
Mr. Robert D. Webster
Heide Weise
Mrs. Joseph Whitley
Natalie Wiggins †
John Wollschlager
Susan Minot Woody †
Mrs. Millicent Yinkey †
Virginia Darling Young †
Henry M. Zachs

*charitable gift annuity
† deceased

THE JEFFREY ANDERSEN FUND FOR EXCELLENCE

Current as of March 2019 and includes gifts received in 2018

Sue & Ed Aberbach
Gary & Ann Agasi
Mrs. Geraldine G. Andersen
Jeffrey Andersen & Maureen McCabe
Mr. & Mrs. Bruce Anderson
Kristina & John Antoniadis
Mr. & Mrs. John Avery
Constance Ayars
Mr. & Mrs. Tim Baffaro
Charlotte Barnum
Truman & Elizabeth Bassett
Stephen & Susan Bates
Mr. & Mrs. Thomas Beers
Maxwell & Sally Belding
Edwin Below
Mrs. Heather Bennett
Dr. Dale Bernardoni
Mr. & Mrs. Charles R. Berry
Mrs. M.J. Bertolini
Karen Bonitz
Mr. & Mrs. Robert B. Boody
Mr. & Mrs. Richard H. Booth
Terry & Deborah H.B. Borton
Ms. Nancy Brinley
Thea Bussmann & Eugene Kapusta
Jonathan & Deborah Butler
Jane & Peter Cable
Mr. & Mrs. Colin Campbell
Dr. & Mrs. I.L. Cantner, II
Mr. & Mrs. Edward Carrier
Thom & Susan Cartledge
Ms. Betty M. Challgren
Jane Ciaccia
Charles T. Clark
Mrs. Francis J. Clark
Jeanne K. Clark
Mrs. Constance S.B. Cliffe, Jr.
Mr. Jonathan L. Cohen

Mr. & Mrs. Harwood B. Comstock
Clare D. Conover
Mrs. Carolyn Cook
Jeff & Betsey Cooley
Patricia & Wayne Coon
Deborah Cooney
Frederick & Rebecca Crosby
Bill & Sandi Dahl
Kathleen Davis
Charles Delinks & Eva Cheshire
Patricia Cyr Devoe
Mr. & Mrs. Leonard Dongweck
Julie & Bill Dunbar
Judith Duran
Mr. & Mrs. Jared Edwards
Peter & Jennifer Eio
Mr. & Mrs. Jeb N. Embree
Elizabeth & Anthony Enders
Craig & Sara Fanning
Mr. & Mrs. Charles Farrow
Mrs. Ethel H. Feltham
Mr. & Mrs. Robert Fisher
Mr. & Mrs. John R. Fix
Mr. & Mrs. Sean Flynn
Mr. & Mrs. Stephen Forbes
John L. & Alison C. Forbis
Ms. Barbara Ford
Mr. John V. Frank
Roxannah Gallagher
Mr. & Mrs. Earl Greenho
Jim & Jane Griffin
Mr. & Mrs. William H. Grover
Robert & Wendy Gunn
Dr. & Mrs. Mahlon Hale
Mr. & Mrs. Frank Hamilton, III
Hildegard & Hunter Hannum
Mr. & Mrs. David Henderson
Susan Hermanson
Rob Hernández
Mr. & Mrs. David Hoffman
Gail M. Hull
Teresa Hurlburt
Joanna J. & Lee A. Jacobus
Hope Juckel-Regan
Judith Kaan
Randie Kahrl
Mr. & Mrs. Romi Kaminskas
Mr. & Mrs. David Kelsey
Jean Callan King
Nancy King
Mrs. Robert Klimek
James & Hedy Korst
Ms. Helen Krieble
Mrs. Evelyn Kropp
Patsy Kumekawa
Liz Kurtz
Mrs. Carolyn Lally
Mr. & Mrs. James Larkin
Patricia Lavery
Mr. & Mrs. Larry J. Lawrence
Joan Leighton
Patricia A. Lenihan
Mr. & Mrs. Kenneth Levin
Ted & Dorita Lieberman
Lorraine Lincoln Lieberman
Mr. & Mrs. Thomas Lombardi
Mrs. Vincent J. Longo
Jane & Townsend Ludington
Nan & Mark Lvoff
Edward & Diane Lyons
Ron & Julie Malloy

George & Olga Manos
 Margot & Paul Maroni
 Dr. & Mrs. Robert S. Martin
 Linda Mathre
 Mr. Robert B. McCann
 Amy & John McCauley
 Connie McIntyre & Wayne Green
 Dr. Timothy P. McLaughlin & Marian Kellner
 Valnère McLean
 Mr. & Mrs. Nicholas Merola, Jr.
 Richard & Catherine Millard
 McGue Millhiser Trust
 Nancy Mol
 Roy & Deborah Moore
 Jeanne Munnelly
 Paula & Kenneth Munson
 Ms. Shirley B. Murtha
 Mr. & Mrs. Robert F. Myers
 Mr. Paul Nelson
 Nancy Newcomb & John Hargraves
 Mrs. Robert Nielsen
 Margo Novak & Andy Gifford
 Elisabeth Oberg & Anthony Venti
 RADM & Mrs. John Padgett
 Mrs. Samuel Parkinson
 Michael & Elena Patterson
 Eleanor Perkins
 Rose Petersen
 Mrs. Evelyn Peyton
 William E. Phillips † & Barbara Smith
 Anne Bingham Pierson, MD

Mary Ann Pleva
 Jerome J. Pollitt & Susan B. Matheson
 Barbara & David Preston
 Mr. & Mrs. John F. Pritchard
 Mrs. Robert Proctor
 Mr. & Mrs. Robert Pyne
 Frank Racette
 George & Jane Rapport
 Mr. & Mrs. William F. Reichenbach
 Mr. & Mrs. Hans H. Rennhard
 Mr. & Mrs. Bill Revill
 Alex Richardson & Liddy Karter
 Mr. & Mrs. William C. Ridgway, III
 Sali Godard Riege Donor Advised Fund of the
 Hartford Foundation for Public Giving
 Joan Rice Robinson & Noah James Rice
 Brian & Carol Rogers
 Faith Saume-Berges
 Ms. Judith Schaaf
 Mrs. Philip Schonberger
 Guy Scribner
 Mrs. Robin Sedgwick
 Thomas & Peggy Sheridan
 Mr. & Mrs. Skip Sibley
 Dr. Lelan F. Sillin, III
 Pamela & Bruce Simonds
 Sharon Slaton & Eve Stokes
 David & Kathleen Smith
 Mr. & Mrs. Robert Smith, Jr.
 Emily Snow
 Barbara Spargo

Beverly Spink
 Julia Stone
 Mrs. Leroy Strohla, Jr.
 Ms. Connie Tapper
 Bette D. Taylor
 Tula Telfair
 Drs. George & Carol Lippia Tenney
 Dr. & Mrs. David Thompson, Jr.
 Mrs. Sandy Thurston
 Susan Trombly
 Nel Udo & Robert Casey
 Susan von Reichenbach
 Carolyn Wakeman & Robert Tierney
 Mr. & Mrs. Russell W. Waldo
 Sidney Wax
 Bob & Betsey Webster
 Mrs. Heide Weise
 Emily N. Wharton
 Harry & Liz White
 Mary Ellen & Craig White
 Mr. Nelson Holbrook White
 Mr. & Mrs. Robert K. White
 Mrs. Joseph Whitley
 George & Cynthia Willauer
 Dave & Reba Williams
 Sydney & Caroline Williams
 Mrs. William G. Winterer
 Ms. Linda Winters
 Mr. & Mrs. Wick York
 Dr. & Mrs. Fred M.H. Ziter, Jr.

BENEFIT AUCTION DONORS

Thank you to all of our Auction donors who help make the Museum's most important fundraiser such a huge success!



BENEFIT AUCTION DONATIONS

Brant Amacher
 Charlene Amacher
 Ann Lightfoot, Inc.
 Aquinnah Jewelry
 Arne E. Ahlberg American Antique Furniture
 Artemisia
 Arthur Murray Dance Center
 Ballek's Garden Center
 Melissa Barbieri
 Lisa Barsumian
 Andy Baxter
 Bee & Thistle Inn

Ruud H. Bergmans & Ann B. Lane
 Mr. & Mrs. Rudolph F. Besier
 Blackkat Leather
 Stephen Borkowski
 Deetsie Bradford
 Bravo Bravo
 Broken Arrow Nursery
 Bromley Mountain
 Bruce Museum
 Burnett's Landscaping, Inc.
 The Bushnell Center for the Performing Arts
 Deborah Butler
 Lori Caine
 Adam C. Calkins & Dennis L. Pough

Linda Camarra
 Bud & Katy Canaday
 The Captain Lord Mansion
 Susan Cartledge
 Chester Package Store
 Chestnut Hill Concerts
 The Chorus of Westerly
 City Bench
 Connecticut River Expeditions
 Connecticut Sun
 Connecticut Tigers
 Connecticut's Beardsley Zoo
 Jeff & Betsey Cooley
 Cranmore Mountain Resort

Anne & Bob Czepiel
Peter C. Daitch
The Deacon – Timothy Pratt Bed & Breakfast
Deep River Jewelry Design
Delamar Southport
Discovery Museum
Divine Wine Emporium
Dog Watch Café
Isabelle Douglas Seggerman
East Wharf Bags
Eastern Connecticut Symphony Orchestra
Mr. & Mrs. Jeb Embree
Essence Center for Beauty & Wellness
The Essex
Essex Steam Train & Riverboat
Essex Winter Series
Faces Aesthetics-Skincare
Angie Falstrom
The Farmer's Dog
Ralf Feyl
Field House Farm
Tom Fitzpatrick & Camille Chwalek
Florence Griswold Museum
Monique Foster
Foxwoods Resort Casino
Frank's Package Store
Judy Friday
Fromage Fine Foods & Coffees, LLC
Guido & Jose Garaycochea
Sandy Garvin
Goodspeed Musicals
Gowrie Group
Alva Greenberg
Dorie Greenspan
Connie Guild
Nancy Hallahan
Daniel S. Hansen & David D.J. Rau
Peter Harron
Hartford Yard Goats
Heavitree of Griswold B&B
Mundy Hepburn
Emily Hildner
Hill-Stead Museum
Alan Horwitz, Well Suited
The Inn at Mystic
The Inn at Stonington
International Bicycle Tours
Isabella Stewart Gardner Museum
Ivoryton Playhouse
Jiminy Peak Mountain Resort
Jonathan Edwards Winery
Judge's Farm, LLC
Andrew & Diane Kaslow
The Kate
Hedy & Jim Korst
La Gondola Providence, Inc.
Latitude 41 Restaurant
Sally & Larry Lawrence
Ron Luich
Fred Lyle
Lyme Shores Sports Club
Madison Arts Cinemas

Fred & Marie Martin
Maureen McCabe
The Mohegan Tribe
Mohegan Sun
Roy & Deborah Moore
Kim Muller-Thym
Musical Masterworks
Mystic Aquarium
Mystic Seaport Museum
The Nautical Arts Workshop
New Britain Museum of American Art
New England Black Wolves
New Haven Symphony Orchestra
New York City Ballet
Okemo Mountain Resort
Old Lyme Country Club
Old Lyme Inn
Old Sturbridge Village
Olio Restaurant
Pampered Pets Grooming Salon & Boutique
Nancy Pinney
Carol Plimpton
Pough Interiors, LLC
Barbara & David Preston
Lee Pritchard
The Producers of *Come From Away*
Pura Vida Pilates
John & Dyanne Rafal
Jane Rapport
Red 36
Lisa Rhodes
Carol Ridgway
Rob Rivers, The Salon & Spa
Janine Robertson
Randy Robinson
The Rockwell Family
Tom Rose & Black Whale Antiques
Rustica Ristorante
Ruth Hendel Productions
S&P Oyster Company
Salon Pure
Zoë Sarbanes Pappas
Saybrook Point Inn, Marina & Spa
Judy Schoonmaker
Seaside Wine & Spirits
Peter & Henrietta Sherwin
Pat Smith
Spicer Mansion
Susan & Robert Staab
Alix & Janie Stanley
Andrew Stevovich
Stonington Country Club
Gregory Strupes
Jodi Strycharz
Sunset Hill Vineyard
Steven Tanenbaum
Billie Tannen & Robert Nielsen of Billie Beads
Erica Tannen Semple
Thames River Greenery
Sandy Thurston
Howard Tuttle
Katie Tuttle & Bill Mulligan

Van Wilgen's Garden Center
Vitality Spa & Wellness
Wachusett Mountain Ski Area
Walden Hill Woodworks
Water's Edge Resort & Spa
Weekapaug Inn
Ms. Sheila M. Wertheimer
Jane M. White
Robert & Tricia Wilber
Elisabeth Wilds
Dmitri Wright
Yale Peabody Museum of Natural History
Yale Repertory Theatre

BENEFIT LEADERS

Mr. Andy Baxter
Mr. David W. Dangremond
Ms. Helen Kriebble
Mr. & Mrs. Timothy Millhiser
Luanne Rice
Ms. Barbara Smith

BENEFIT BENEFACTORS

Mr. & Mrs. Jeb N. Embree
Thomas Fitzpatrick & Camille Chwalek
Dennis & Michele Flynn
Mr. Daniel S. Hansen
Andrew & Diane Kaslow
Keith & Elaine Knowlton
Jeff & Joan Priest
Mr. & Mrs. John F. Pritchard
Eliza & Matthew Sharp
Caroline & Milton J. Walters
Betsey & Bob Webster

BENEFIT PATRONS

Jeffrey Andersen & Maureen McCabe
Mr. & Mrs. Rowland Ballek
Mrs. Charles E. Baskett
Stephen & Susan Bates
Mr. & Mrs. Wilson G. Bradford
Mr. James H. Caspi & Dr. Lenora Felderman
Audrey Conrad
Jeff & Betsey Cooley
Mr. & Mrs. Robert Czepiel
Ramzi Dagher
Mr. & Mrs. William Q. Dowling
Mr. Peter Eliel
Thomas Fay & Jeffery Kuchenbecker
Monique & Eric Foster
Susan Geisenheimer
Paul & Linda Holt
Paul & Lynn Ingrassia
John Kiker & Dan Hulseberg
Fred & Marie Martin
Alison McCall
Marcia A. McLean & Peter Lasusa, Jr.
Mr. Roger W. Parkman
Jane Rapport
Mr. & Mrs. Henry Skelsey
Mrs. Sandy Thurston
Carolyn Wakeman & Robert Tierney
Ms. Kristen Widham

2018 ANNUAL FUND DONORS

The Annual Fund is the cornerstone of the Museum's operations, supporting one fourth of our annual operating budget. Many thanks to those who have made it a priority to help support the critical daily costs of running this institution with excellence.



PRESIDENT'S CIRCLE

Mr. Andy Baxter
Maxwell & Sally Belding
Jonathan & Deborah Butler
Mr. Jonathan L. Cohen
Kim Curtain
Mr. & Mrs. Robert Czepiel
David W. Dangremond
Mary S. Dangremond
The Vincent Dowling Family Foundation
Mr. & Mrs. Frank Hamilton, III
Paul & Linda Holt
Andrea & Allan Inglis
J. David Kelsey
Chester Kitchings Family Foundation
James & Hedy Korst
Ms. Helen Kriebler
Mr. & Mrs. Larry J. Lawrence
Richard & Catherine Millard
Roy & Deborah Moore
Dr. & Mrs. John Niblack
Mr. & Mrs. J. Geddes Parsons
Jeff & Joan Priest
George & Jane Rapport
David & Betsy Sams
Ms. Barbara Smith
Joe & Clinton Standart
Jean T. Walker
Bob & Betsey Webster

DIRECTOR'S CIRCLE

Joshua Abram & Cristina Azario
Frances C. Ashley
Mr. & Mrs. Richard H. Booth
Thom & Susan Cartledge
Charles T. Clark
Jeff & Betsey Cooley
Mr. & Mrs. Jeb N. Embree
Eric & Monique Foster
Nancy Newcomb & John Hargraves
Wayne & Barbara Harms
Joanna J. & Lee A. Jacobus
Don & Sue Joffray
Mrs. Robert Klimek
Ted & Karen Kremer
Dr. & Mrs. Robert S. Martin
Mr. & Mrs. John E. Noyes
Barbara & David Preston

Mr. & Mrs. John F. Pritchard
The Rev. Canon Mark KJ & Eleanor Robinson
Katie Tuttle & Bill Mulligan
George & Cynthia Willauer

CURATOR'S CIRCLE

Jeffrey Andersen & Maureen McCabe
Constance Ayars
Laura Beach & Joshua Kalkstein
Mr. & Mrs. Rudolph F. Besier
Mrs. John P. Bent, Jr.
Mr. & Mrs. Russell E. Burke, III
Harris Legacy Foundation
Ms. Betty M. Challgren
Mr. & Mrs. Peter Cummins
Mr. & Mrs. Chad Floyd
John L. & Alison C. Forbis
Mr. & Mrs. David Frankel
Karen Katen & Robert Williams
Dr. & Mrs. Gerald Laubach
Julie Sanderson Lyman
Mrs. Helen Maher
Tracy & Nicholas Mckee
Melissa Meredith
McGue Millhiser Trust
Mr. & Mrs. Clement C. Moore, II
Dr. Margaret O'Shea & Mr. Daniel O'Shea
Mrs. Stephen Percy
Eleanor Perkins
John & Dyanne Rafal
Luanne Rice
Dr. & Mrs. Thomas P. Sculco
Carolyn Wakeman & Robert Tierney
Caroline & Milton J. Walters
Ms. Colleen Wetsel
Mr. Kenneth Woodcock
Zachs Family Foundation

FRIEND'S CIRCLE

Anonymous
Sue & Ed Aberbach
Gary & Ann Agasi
Julie & James Alexandre
David & Charlene Amacher
Mr. & Mrs. Bruce Anderson
Thomas Angers & Timothy VanDaff
Kristina & John Antoniadis
Elizabeth Attebery
Gina Atwood

Sally H. Aubrey
Mr. & Mrs. John Avery
Dr. & Mrs. Robert Ballard
Nadinia R. Ballestrini
Charlotte Barnum
Mrs. Charles E. Baskett
Stephen & Susan Bates
Charles & Barbara Beal
Deborah Beal
Suzanne Beatty
Mr. & Mrs. Michael Beaudette
Rebekah Beaulieu & Patrick Ford
Mr. & Mrs. Thomas Beers
Mr. & Mrs. John Benda
Mrs. Augusta Benjamin
Mrs. Kathleen Bennett
Bill & Sharon Bergquist
Dr. Dale Bernardoni
Mr. & Mrs. Charles R. Berry
Mrs. M.J. Bertolini
Mrs. Phyllis Bevington
Patricia & John Biasuzzi
Dr. & Mrs. Russell Bingham
Mrs. Tina Birkic
Lydia Blacker
Mrs. Diana Blair
Ann Bliss
Wayne Boettner & Hildegard Wiss-Boettner
Bogaert Construction Company, Inc.
Mr. & Mrs. Robert B. Boody
The Rhoda & David Chase Family
Foundation, Inc.
Mr. & Mrs. Wilson G. Bradford
Michael & Eloise Brady
Adrienne Brennan
Mr. & Mrs. Donald Brigham
Charles & Nicoll Brinley
Dr. & Mrs. Andy Bronin
Ms. Lorraine M. Broom
Mary Broughton
Irene M. Buckley
Mr. & Mrs. Wim Budding
Richard V. W. Buel, Jr.
M.K. Busch & D. Picchioni
Joan H. Butler
Rolf & Joy Bylan
Kathy Calnen & Michael McKinley
Karen L. Camlet
Pat & John Campion

Mr. & Mrs. S.E. Canaday
Dr. & Mrs. I.L. Cantner, II
Helen Cantrell & John Heckman
James & Bridget Carey
Sharon Carlee
Alisa Carlson
Mr. & Mrs. Paul Carroll
Mr. & Mr. Kevin Cassidy
Mr. & Mrs. Chris Cathcart
Mr. & Mrs. Mike Cathcart
Chris Chamberlain Puffer
Eleanor Champion
Helen & Bill Chatman
Jane Chesnutt & Mallory Rintoul
Mr. & Mrs. Samuel W. Childs
Jane Ciaccia
Robert & Heather Ciosek
Mrs. Francis J. Clark
Jeanne K. Clark
Lawrence & Cynthia Clark
Mrs. Virginia Clark
Karen Clarke
Ms. Kay Knight Clarke
Mrs. Constance S.B. Cliffe, Jr.
Ms. Barbara Coffin
Blythe K. Colby
Clare D. Conover
Audrey Conrad
Patricia & Wayne Coon
Anthony & Ann Cooper
Mary Anne Cox
Mr. & Mrs. Donald B. Craft
Frederick & Rebecca Crosby
Frank & Susan Cumiskey
Margaret M. Cunningham
Carol Curland & Richard Colman
Sally D'Aquila
Rise E. Daniels
Barbara O. David
Kathleen Davis
Mr. & Mrs. Nathaniel B. Day
Mr. Robert M. Del Gatto
Diana & Peter DeLisa
JoAnne Delle Cave
Meg Dempsey
Franca L. DeRosa
Linda DiFazio
Mr. & Mrs. John Dinwiddie
Mr. & Mrs. Leonard Dongweck
Mr. & Mrs. William Q. Dowling
Mr. & Mrs. Douglas L. DuMond
Julie & Bill Dunbar
Judith Duran
Enid Storm Dwyer Foundation
Terry Eddy
Elizabeth B. Egan
Peter & Jennifer Eio
Jim & Isabelle English
Mr. & Mrs. Evans
Chuck Everett
Nancy Fairchild
Mr. & Mrs. Edward P. Farman
Mr. & Mrs. Charles Farrow
Carolyn Fast & Scott Brown
Patricia & Stephen Fedak in honor of Hope
Juckel-Regan
Mrs. Ethel H. Feltham
Melissa & Trevor Fetter
Dr. and Mrs. Bryson Filbert
Mr. & Mrs. John R. Fix
Ms. Juana Flaggy
Julie Ford

Kathryn & Priscilla Forschler
Dr. Elizabeth & Marty Frame
Jim & Barb Francese
Mr. John V. Frank
Mrs. John E. Friday, Jr.
Jack & Chip Frost
Roxannah Gallagher
Linda B. Gardiner & Gerald Raulinaitis
Ms. Marcia Gardiner
Mr. & Mrs. John Giaconia
Wendy Gifford & Gerald Degenhardt
Richard & Katharine Gildersleeve
John & Maren Gillespie
Mr. & Mrs. C.P. Gilmore
Alan & Judy Goldbecker
Golding-Pollack Family
Mr. & Mrs. Ernest C. Goodrich
Dr. & Mrs. Thomas Gotowka
Jerry Graham & Emily Moore
Thomas & Betsy Grant
Mrs. Constance Gray & Mr. George Leighton
Dolores Green
Ms. Katherine Green
Mr. & Mrs. Edward Greene
Mr. & Mrs. Earl Greenho
Ms. A. Julia Griswold
Laura Griswold
Malcolm & Janet Gross
Mr. & Mrs. John Grzymkowski
Robert & Wendy Gunn
Mr. & Mrs. Robert P. Haff
Patricia Hagberg
Kate & Michael Haggans
Dr. & Mrs. Mahlon Hale
Susan & John Hall
Martina Hamilton & Robert Peterson
Mr. Daniel S. Hansen
Elizabeth T. Harbison
Linda Hargrave in honor of Sharon &
Gene Colvin
Leah Hartman
Jeff & Marisa Hartmann
Nancy J. Healy
Mr. & Ms. John Heiser
Robert & Susan Hellier
Mr. & Mrs. David Henderson
Mrs. James S. Herman
Susan Hermanson
Rob Hernández
Mr. & Mrs. Hans Jurgen Hess
Taylor & Pam Hicks
Mrs. Muriel Hinkle
Mr. & Mrs. David Hoffman
Ms. Sonia Holden Evers
Richard & Pat Holloway
Mr. & Mrs. John Horn
Mrs. Peyton C. Horne
Mr. & Mrs. James Horton
Mr. & Mrs. Skip Hubbard
Gail M. Hull
Loisann Huntley
John Jay & Sally Huss
Ms. Kathleen Ives
Barbara & Ray Jacobsen
Mr. & Mrs. Edward R. James
Jane Rotrosen Agency
Mr. Graham K.L. Jeffrey
Alexandra Johnson
Lauretta A. Johnson
Mrs. Douglas N. Jones
Hope Juckel-Regan
Joanne Jurs

Judith Kaan
Mrs. Amy Day Kahn
Randie Kahl
William & Keiko Kaiser
Dr. & Mrs. David Kalayjian
Mr. & Mrs. Romi Kaminskas
Steve Kase MD & Terry Klee
James L. Kerr & Helen Miller
Sybil Kerrigan
John Kiker & Daniel Hulseberg
Nancy King
Mr. & Mrs. Oran Kirkpatrick
Ms. Patricia Kitchings
Karin & Ken Kline
Douglas Knight & Susan Williams
Keith & Elaine Knowlton
Cynthia L. Konney
Mr. & Mrs. John Kopchik
Lee Ann Kornacki
Mrs. Evelyn Kropp
Liz Kurtz
Mrs. Carolyn Lally
Mrs. Elin Larson
Patricia Lavery
Mr. & Mrs. Gerald Lemega
Patricia A. Lenihan
Dr. & Mrs. Thomas Lesnik
Mr. & Mrs. Kenneth Levin
Mrs. Carol LeWitt & Bruce Josephy
Mr. & Mrs. Thomas Lombardi
Allyson & William Long
David & Sandy Long
Mrs. Vincent J. Longo
Mr. Robert Lorenz
Ms. Bunnie Lubs
Jane & Townsend Ludington
Edward & Diane Lyons
Mark & Ellen Maloney
The Maltby Family
George & Olga Manos
Margot & Paul Maroni
Fred & Marie Martin
Ms. Marybeth Marx & Eric Whittall
Frank Masek
Mary Matthews
Henry & Joan May
Stuart & Lesley May
Mr. & Mrs. George Mayer
Alison McCall
Mr. Robert B. McCann
Robert & Phyllis McCarron
Amy & John McCauley
John & Karin McCormick Foundation
Connie McIntyre & Wayne Green
Dr. Timothy P. McLaughlin & Marian Kellner
Nancy McLoughlin
Epstein Family
Carl & Fran Mellin
Mrs. Timothy Mellon
Mr. & Mrs. Newton S. Merrill
Robert & Françoise Middleton
James Miller & Regan Stacey
Margaret Milnes & Matthew Stuart
Ms. Janet Minella-Didier
Alison C. Mitchell
Nancy Mol
Bob & Liz Molloy
Mr. & Mrs. Kieran Mooney
Mr. Peter Moore
Diantha Morse
Dr. & Mrs. Thomas Muhlfelder
Sallie & Ted Mundy

New Artists' Trail Celebrates Art, History, and Nature

A \$1 MILLION GRANT from the Robert F. Schumann Foundation has allowed the Museum to engage one of the country's leading design firms, Stephen Stimson Associates Landscape Architects of Cambridge, Massachusetts, to create and implement a Landscape Plan that re-envisioned the 12-acre site. Once completed, visitors will be immersed in a culturally interpretive exploration of the grounds, learning about the site's history and ecology. Robert Schumann was a devoted trustee and patron of the Museum for nearly two decades. We are honored to continue his legacy as an avid naturalist and philanthropist by dedicating the Artists' Trail, a major component of the plan, in his name.

At the turn of the last century, Impressionist painters gathered at Florence Griswold's boardinghouse along the Lieutenant River in Old Lyme to capture the landscape on canvas, forging an art colony that would become the nation's center of American Impressionism. Today, the Florence Griswold Museum celebrates that rich tradition as a nationally accredited museum fostering the understanding of American art, emphasizing the art, history, and landscape of Connecticut. The Museum stands at a pivotal moment in its history. Concurrent with years of visitation growth has been the enlargement of the historic site's footprint, which culminated in 2016 with the Museum's acquisition of the last remaining private parcel of Miss Florence's original estate. It was a long-held goal to fully reunite the historic property that had been sold prior to her death in 1937 and then subsequently subdivided. The land acquisition and Schumann's gift provided the Museum an opportunity to restore the cultural authenticity of Miss Florence's estate.

To ensure that the plan has positive environmental consequences, an Ecological Impact Assessment was prepared by the firm Great Ecology of New York. They concluded that the plan, "strives for balance between cultural and ecological interpretations of the Museum landscape while enhancing, diversifying, and restoring the native landscape." The Museum worked closely with former Audubon Connecticut Executive Director Stewart J. Hudson, whose organization reviewed the project in detail. "Our overall conclusion is that this is a great project and will provide significant ecological benefits to this critical site," stated Hudson. "We believe this project will benefit migratory birds and serve as a great demonstration area for techniques that visitors can take home with them to inspire conservation action in their own yards."

We hope that you visit soon for an experience that interweaves art, history, and landscape in ways rarely found in the museum world. The Trail opens to the public July 22, 2019.



The Overlook



The Event Lawn



The Orchard



The Woodland



The Artists' Trail is highlighted in gold.

1 River Walk: meander along the bank of the Lieutenant River, a subject beloved by Lyme Art Colony painters. Stop at the overlook to view birdlife. Enjoy a terraced lawn, a rainwater garden of native plants, and benches for tranquil contemplation.

2 Hedgerow Walk: wander the path with views of the site of Childe Hassam's painting studio, the apple orchard, and a bird-friendly mix of plantings along an old lane leading to the lawn where artists frolicked in front of the Florence Griswold House.

3 Garden Walk: delight in beds of lush, heritage flowers and vegetables like those Florence Griswold cultivated to serve her artist boarders, with access to the John & Dyanne Rafal Landscape Center and its exhibits detailing historic features and uses of the Lyme landscape.

4 Woodland Walk: stroll the shady path above a stream through the most wooded part of our grounds, an area kept semi-wild during the Art Colony years. Access to the bridge leading to the Lyme Art Association.

2018 ANNUAL FUND DONORS, continued

Donna B. Munroe
Paula & Kenneth Munson
Mr. & Mrs. Charles M. Murphy, Jr.
Mrs. Marcia Murphy
Mrs. Victoria T. Murphy
Ms. Shirley B. Murtha
Gay Myers & Lance Mayer
Mr. & Mrs. Geoffrey Naab
Mr. Paul Nelson
Jeanne Nichols
David & Linda Nolf
Paula Nowakowski & Edward Walker
Mary S. O'Connor
Suzanne P. & Anthony M. O'Connor
Jane O'Donnell
Mary K. Oberhelman
Dee Osborn
Mrs. John Osborne
RADM & Mrs. John Padgett
Mr. Charles H. Page
Mrs. Phyllis Pallett-Hehn
Mrs. Frederick Parker
Mr. & Mrs. Harry Parker
Jonathan Parsons
Dr. & Mrs. Neil Pastel & Family
Michael & Elena Patterson
Fred & Kathryn Pechar
Dolly Peress
Judith & Joe Peritz
Mr. Edward G. Perkins
Mr. & Mrs. John Perkins
Mrs. Evelyn Peyton
Anne Phelan McCloskey
Mary Ann Pleva
Jerome J. Pollitt & Susan B. Matheson
Mrs. Robert Proctor
Mrs. Weston C. Pullen, Jr.
Frank Racette
Meg Raftis & Stillman Brown
Mr. G. Remak Ramsay
Glenn Randall
Jean Read
Carolyn S. Reed
Marilyn & Robert Regan
Mr. & Mrs. William F. Reichenbach
Carolyn Reimers
Mr. & Mrs. Rennhard
James Reynolds
Mrs. Joseph Rhodes
Lisa Rhodes
Alex Richardson & Liddy Karter
Mr. & Mrs. Mike Richardson

Dean & Pamela Richlin
Mr. Jonathan Rickard
Mr. & Mrs. William C. Ridgway, III
Mrs. Sali Godard Riege
Ruth R. Robins
Joan Rice Robinson & Noah James Rice
Christopher & Rosalind Roosevelt
Frani & Steven Ross
Greg & Daneen Roth
Sandra & Bill Rueb
Mr. & Mrs. James E. Rutledge
Mr. & Mrs. Michael T. Ryland
Susan E. Saltus
Lorraine & Margaret Samela
Elizabeth Sandri
Faith Saume-Berges
Dr. Craig & Pietrina Saxton
Mr. & Mrs. Philip Sayres
Mrs. Judith Schaaf
Mrs. Peter Schavoir
Charlotte Schlesselman in honor of
Jane & Townsend Ludington
Mrs. Carol Schneider
Eleanor Schneider
Judith Schoonmaker
Mary Schroeder & Cathy Spencer
Anne Scott
Paul Sellier
Dr. & Mrs. Joseph P. Semple
Mr. & Mrs. Art Sharron
Ms. Elizabeth Sheehan
Eileen Shekosky
Mrs. Phyllis Shepard-Tambini
Bob & Charlotte Shepard
Ms. Marian Shilstone
Pamela Shine
Mr. & Mrs. Skip Sibley
Jonathan Silbert & Mary McHale
Pamela & Bruce Simonds
Jane Siris & Peter Coombs
Theresa Sistare
Mrs. Elting H. Smith
David & Kathleen Smith
Mr. Joseph Smith & Mr. John Lawson
Mr. & Mrs. Robert Smith, Jr.
Ellen Smoller
Mr. Thomas Soboleski
Mrs. Donna R. Speirs
Beverly Spink
Mrs. L. Edwin Sproul
Mr. & Mrs. Robert Staab
Ms. Donna Breen Stamm

Andrea Stanton
Patricia B. Stark
Mary & Cliff Stehle
Michelle Stewart
Patricia Storace
Dr. & Mrs. William T. Stubenbord
Jack & Laurie Sulger
Celine Sullivan
Mary Sullivan
Mr. Leonardo H. Suzio
Bette D. Taylor
Sally Taylor
Tula Telfair
Drs. George & Carol Lippia Tenney
Mrs. Sandy Thurston
Richard J. & Sharon A. Torrenti
Mr. & Mrs. Robert W. Trainer
Barbara S. Traskos
Mr. & Mrs. Howard G. Tuttle, Jr.
Dr. & Mrs. Dean Uphoff
Frances Violante
Judith C. Vitali
Maris Wacs & Dan Marderosian
Mrs. John M. Washburn, Jr.
Bruce & Beverly Watrous
Irene Watson & Norman Dupuis
Mrs. Heide Weise
Dr. & Mrs. John R. Wells
Dr. Tina West
Harry & Liz White
Mr. Nelson Holbrook White
Mrs. Joseph Whitley
Karin Forde Whittemore
Katherine F. Whritner
Tom & Annie Wilcox
Priscilla Bollard Wilder
Janice Wiley
Sydney & Caroline Williams
Barbara Willkens
Adela Wilmerding
Mr. & Mrs. Richard A. Windatt
Mr. & Mrs. Thomas D. Wing
Mrs. William G. Winterer
John Witmer
Pandy & John Wohler
Mr. Daniel Woodhead, III
Mr. & Mrs. Tom Woodhead
Mrs. George N. Woodworth
Ms. Lorraine Yurkewicz
Dr. & Mrs. Fred M.H. Ziter, Jr. in honor of
David D.J. Rau

MEMBERS

Through March 17, 2019

The dedicated support of our members helps the Museum continue its tradition of public service to a broad and diverse community, inspiring thousands of children and adults each year. And for that we are sincerely grateful!



BENEFACTOR

Mr.† & Mrs.† Thomas Archibald
Frances C. Ashley
Mr. Charles Bartlett†
Mr. Andy Baxter &
Carley Cunniff†
Mr. & Mrs. Maxwell M. Belding
Mrs. Ruth Belding†
Mr. & Mrs. Rudolph F. Besier
Mr. Max F. Brevillier†
Mary Broughton
Mr. Phillip C. Broughton†
Mr. Fenton B. Brown†
Mrs. John Crosby Brown†
Mr.† & Mrs.† Howard D. Brundage
Peter & Valerie Bulkeley
Mr. & Mrs. Edward Carrier
Mr. Peter G. Chapman
Mr. Alphaeus P. Cole†
Mr. Homer Crawford†
Sara Twigg Crawford†
David W. Dangremond
Mary S. Dangremond
Mr. Hugh DeHaven†
Mr. Robert M. Del Gatto
Mr. & Mrs. Douglas L. DuMond
Mrs. George Page Ely†
Mr.† & Mrs.† Edwin D.
Etherington
Mr.† & Mrs.† John C. Evans
Emily Fisher & Evan Griswold
Mr.† & Mrs.† Freeman Foote
Mrs. E. Clayton Gengrast
Mrs. Ely Griswold†
Mrs. Matthew Griswold Sr.†
Mr.† & Mrs.† W.E.S. Griswold Jr.
Mr. & Mrs. Robert P. Gunn
Mr. Vernon H. Haase†
Mrs. Frederick W. Hilles†
Mr.† & Mrs.† John L. Hoffman
Mr. & Mrs. John Horn
Mr. & Mrs. Thomas H. Johnston
Mr.† & Mrs.† Robert H. Kriebel
Mr.† & Mrs. Conrad J.
Kronholm Jr.
Dr. & Mrs. Gerald D. Laubach
Mr. & Mrs. Lee Mergy
Mr. & Mrs. Robert Missel
Robert† & Sandy Mulligan

Mrs. Carl Muschenheim†
Mr.† & Mrs.† Jephson J.
O'Connell
Mrs. Jo Raynes-Haase
Mrs. Alfred Renshaw†
Mrs. Elvia Enders Richard†
Mr. & Mrs. John R. Robinson
Carol & Steve† Ross
David & Betsy Sams
Mr.† & Mrs. Richard J. Schwartz
Mr.† & Mrs.† Lelan F. Sillin Jr.
Dr. & Mrs. † Lelan F. Sillin, III
Mr.† & Mrs.† Gregory Smith
Mr.† & Mrs.† George B. Tatum
Mr.† & Mrs. Paul E. Taylor Jr.
Mr. & Mrs. Samuel Thorne, Jr.
Mrs. Hugh B. Vanderbilt†
Mr.† & Mrs.† Wilson Wilde
Mr. & Mrs. George J. Willauer
Mr.† & Mrs.† Ramsay Wilson
Mr.† & Mrs.† Daniel
Woodhead, Jr.
Mr.† & Mrs.† George M. Yeager
The Zachs Family

LIFE

Jeffrey Andersen &
Maureen McCabe
Mrs. Margaret Atwood
Mrs. Pamela Brewster
Ms. Nancy Brinley
Jennifer & Mark Brock
Mr. William Browning
Mrs. William Carley &
Catherine Mackey
Sandra & Arnold Chase
Charles T. Clark
Hyla Cohen
Mr. & Mrs. David J. Cooksley
Mrs. Dana Cooley
Jeff & Betsy Cooley
The Vincent Dowling
Family Foundation
Mr. & Mrs. David G. Elkins
Ms. Barbara Ford
Dr. & Mrs. David F. Frankel
Dr. Jeffrey Goldblatt
Mr. & Mrs. William Grabe
Ms. Alva Greenberg

Mrs. William Boatner Reily, III
Mr. Matthew Griswold
Mr. & Mrs. Charles J. Hamm
Mrs. Theodore R. Hillhouse
Mr. & Mrs. Charles Hinckley
Mrs. Benjamin Jones IV
Mr. & Mrs. Chester W.
Kitchings, Jr.
Ms. Helen Kriebel
Isabel Leach
Dr. & Mrs. William A. Lieber
Mr. & Mrs. Richard Lightfoot
Dr. Clark S. Marlor
Mrs. Timothy Mellon
Mr. & Mrs. Clement C. Moore, II
Mr. & Mrs. James B. Murphy, II
William E. Phillips† &
Barbara Smith
John & Dyanne Rafal
Ruth R. Robins
Mrs. Peter Schavoir
Mrs. Philip Schonberger
Dr. & Mrs. Joseph P. Semple
Mr. & Mrs. Spratt
Janie & Alix Stanley
Mr. John Steffian
Mr. Daniel L. Stix†
Mr. & Mrs. Whitney A. Talcott
Mr. & Mrs. Rhys F. Townsend
Mr. William Blunt White
Mrs. William G. Winterer
Mrs. E. Lisk Wyckoff, Jr.

PRESIDENT'S CIRCLE

Mr. Andy Baxter
Maxwell & Sally Belding
Jonathan & Deborah Butler
Mr. Jonathan L. Cohen
Kim Curtain
Mr. & Mrs. Robert Czepiel
Mr. & Mrs. David W. Dangremond
The Vincent Dowling Family
Foundation
Mr. & Mrs. Frank Hamilton, III
Paul & Linda Holt
Andrea & Allan Inglis
J. David Kelsey
Chester Kitchings Family
Foundation
James & Hedy Korst

Ms. Helen Kriebel
Mr. & Mrs. Larry J. Lawrence
Richard & Catherine Millard
Roy & Deborah Moore
Dr. & Mrs. John Niblack
Mr. & Mrs. J. Geddes Parsons
Jeff & Joan Priest
George & Jane Rapport
David & Betsy Sams
Ms. Barbara Smith
Joe & Clinton Standart
Jean T. Walker
Bob & Betsey Webster

DIRECTOR'S CIRCLE

Joshua Abram & Cristina Azario
Frances C. Ashley
Mr. & Mrs. Richard H. Booth
Thom & Susan Cartledge
Charles T. Clark
Jeff & Betsey Cooley
Mr. & Mrs. Jeb N. Embree
Eric & Monique Foster
Nancy Newcomb &
John Hargraves
Wayne & Barbara Harms
Joanna J. & Lee A. Jacobus
Don & Sue Joffray
Mrs. Robert Klimek
Ted & Karen Kremer
Dr. & Mrs. Robert S. Martin
Mr. & Mrs. John E. Noyes
Barbara & David Preston
Mr. & Mrs. John F. Pritchard
The Rev. Canon Mark KJ &
Eleanor Robinson
Katie Tuttle & Bill Mulligan
George & Cynthia Willauer

ARTISTS' CIRCLE

Truman & Elizabeth Bassett
Michael & Eloise Brady
Ms. Judith Cotton
Nena Evans & family
Mr. John V. Frank
Karen Katen & Robert Williams
Keith & Elaine Knowlton
Nan & Mark Lvoff
Stephen & Lynne Wardlaw
George & Betsy White

PATRON

Tizzy Bannister
 Julie & Kevin Buchanan
 Mr. & Mrs. Paul Carroll
 Ms. Betty M. Challgren
 Rhoda Chase
 Mr. & Mrs. Samuel W. Childs
 Lynn Coville
 Frederick & Rebecca Crosby
 Mr. & Mrs. Peter Cummins
 Frank & Susan Cumiskey
 Mr. & Mrs. William Q. Dowling
 Judith Duran
 Elizabeth & Anthony Enders
 Susan Ferguson
 Mr. & Mrs. William Fitzgerald
 Julie Godbout LeBlanc
 Mr. & Mrs. Edward Greene
 Malcolm & Janet Gross
 Mr. & Mrs. Robert P. Haff
 Mr. Daniel S. Hansen
 Lorraine Lincoln Lieberman
 David & Cynthia Manke
 Roslyn Meyer
 Laura Lee Miller & Brian Bowes
 McGue Millhiser Trust
 Mrs. Stephen Percy
 Mr. & Mrs. John Perkins
 Mrs. Weston C. Pullen, Jr.
 Judith Schoonmaker
 Ellen Smoller
 Thomas St. Louis &
 Mary Powell-St. Louis
 Maris Wacs & Dan Marderosian
 Carolyn Wakeman & Robert Tierney
 Sydney & Caroline Williams

SUSTAINING

Sue & Ed Aberbach
 Fran & Carol Adams
 Gary & Ann Agasi
 Julie & James Alexandre
 Mr. & Mrs. Bruce Anderson
 Kristina & John Antoniadis
 Liz & Ray Archambault
 Dr. Paul Armond
 Mr. & Mrs. Rowland Ballek
 Stephen & Susan Bates
 Deborah Beal
 Mr. & Mrs. Thomas Beers
 Tiffany Bell
 Ann & Alan Blanchard
 James & Bridget Carey
 Jonathan Carlisle & Michele Schavoir
 Mike & Connie Casinghino
 Lorri & John Chapman
 Lawrence & Cynthia Clark
 Arthur Clarke & Susan Sloan
 Mr. & Mrs. George Collins
 Patricia & Wayne Coon
 Mr. Peter Cove & Dr. Lee Bowes
 Carol Curland & Richard Colman
 Betty Diamond & Bruce T. Volpe
 James & Laura Duncan
 Mr. & Mrs. Henry E. Dunn, III
 Peter & Jennifer Eio
 Mr. & Mrs. Peter Engelking
 Nancy Fairchild
 Mr. & Mrs. Charles Farrow
 Eleanor E. Ferguson
 Melissa & Trevor Fetter

Mr. & Mrs. Chad Floyd
 Mr. & Mrs. Stephen Forbes
 John L. & Alison C. Forbes
 Allan Dodds Frank & Lilian M. King
 Alan & Judy Goldbecker
 Don & Doina Gonci
 Mr. & Mrs. Ernest C. Goodrich
 Robert & Lynda Gorman
 Mr. & Mrs. Earl Greenho
 Karen Hagberg & Mark Jackson
 Dr. & Mrs. Mahlon Hale
 Elizabeth T. Harbison
 Rita Hendel
 Ms. Sonia Holden Evers
 Andi & Stephen Jacobs
 Dorothy Jensen
 Dr. & Mrs. David Kalayjian
 Jason Kemp & Kimball Robbins
 Ms. Patricia Kitchings
 Janet Lage & Randy Nixon
 Mr. John T. Lansing
 Mr. & Mrs. Kenneth Levin
 David Lewis, Jr.
 Allyson & William Long
 Julie Sanderson Lyman
 Mr. & Mrs. Michael Maney
 Nancy & Bill Marston
 Robert & Phyllis McCarron
 Teresa McShane
 Greg Melville & Susan Fox
 Mr. & Mrs. Kieran Mooney
 Wayne & Susan Mountz
 Mr. & Mrs. Robert F. Myers
 Joan & Dennis Overfield
 Michael & Elena Patterson
 Eleanor Perkins
 Mr. & Mrs. Robert Pyne
 Mr. & Mrs. Raymond Quinlan
 Mr. G. Remak Ramsay
 Carolyn Reimers
 Francisco Ribas
 Luanne Rice
 Dean & Pamela Richlin
 Mrs. Sali Godard Riege
 Christopher & Rosalind Roosevelt
 Dr. & Mrs. Thomas P. Sculco
 Mr. & Mrs. Art Sharron
 Mr. & Mrs. Henry Skelsey
 Michelle Stewart
 Mary Sullivan
 Dr. & Mrs. David Thompson, Jr.
 Mr. & Mrs. Russell W. Waldo
 Caroline & Milton J. Walters
 Mrs. Heide Weise
 Dr. & Mrs. John R. Wells
 Harry & Liz White
 Nelson Holbrook White
 Peter Wieschenberg & Constance Wright
 Mr. & Mrs. Richard A. Windatt
 Mr. & Mrs. Thomas D. Wing
 Zachs Family Foundation

SUPPORTING

Susan & John Abbot
 Linda Ahnert
 Linda Allard
 Don & C. Diane Allen
 Cynthia Allyn
 June Anderson
 Susan & Richard Anderson
 Chandra Aquilina
 John & Rebecca Armstrong

Pamela & Roderick Atkins
 Elizabeth Attebery
 Mr. Hugh Barton
 Dana Basso
 Charles & Barbara Beal
 Mr. & Mrs. James Bechtel
 Gigi Becker
 Mrs. Augusta Benjamin
 Mrs. Heather Bennett
 Curt & Linda Berggren
 Bill & Sharon Bergquist
 Mr. & Mrs. Charles R. Berry
 Mrs. M.J. Bertolini
 Wayne Boettner & Hildegard Wiss-Boettner
 Mr. & Mrs. Franklin Bohlen
 Terry & Deborah H.B. Borton
 Carolyn Boyle
 Mr. & Mrs. Peter Brainard
 Mrs. Stanford Brainerd
 Mr. & Mrs. Jeffrey H. Brewer
 Melanie Brigockas & Robert O'Connor
 Stephen & Alison Brinkmann
 Dr. & Mrs. Andy Bronin
 Ms. Lorraine M. Broom
 Joan & Lyle Brundage
 Susan Burns & Robert Williams
 Mr. Douglas Burton
 M.K. Busch & D. Picchioni
 Thea Bussmann & Eugene Kapusta
 Joan H. Butler
 Jane & Peter Cable
 Irene Campbell
 Mr. & Mrs. S.E. Canaday
 Mr. & Mrs. William Carter
 Mr. & Mrs. Kevin Cassidy
 Eleanor Champion
 Helen & Bill Chatman
 Lynn H. Cherry
 Jane Chesnutt & Mallory Rintoul
 Robert & Heather Ciosek
 Mr. & Mrs. Herbert T. Clark, III
 Joyce Clark
 Constance Clement
 Mr. & Mrs. Harwood B. Comstock
 Mrs. Carolyn Cook
 Jacobus & Kathleen Coumans
 Mr. & Mrs. Donald B. Craft
 Mr. & Mrs. Donald Critchett
 Ms. Mary Jean Cumiskey
 Mr. & Mrs. Alan Curtiss
 Ms. Karen Dahle & Ms. Sue Hessel
 George E. Davy
 Mr. Robert Delrusso
 Mr. & Mrs. Rodney W. Devine
 Shirley DiMauro
 Ms. Nancy Downie
 Michael Dudich & Buck Drummond
 Julie & Bill Dunbar
 Bob & Nancy Dunn
 Tom & Kathy Dziadosz
 Mr. & Mrs. Jared Edwards
 Mr. & Mrs. Robert English
 Shaun English
 William Everson
 Margaret & Pierre Faber
 Lillie Feierabend
 Mr. Ira Feinberg & Mrs. Andrea Feinberg
 Jennifer Finlayson & Elizabeth Finch
 Thomas Fitzpatrick & Camille Chwalek
 Mr. & Mrs. John R. Fix
 Mr. William Follett
 Kathryn & Priscilla Forschler

Mrs. John E. Friday, Jr.
Earla K. Frisbie
Diane D. Fuller &
Thomas Kenneally
Roxannah Gallagher
Susan & Emile Geisenheimer
Mr. Edward F. Gerber
Wendy Gifford &
Gerald Degenhardt
John & Maren Gillespie
Dr. Barbara Glista
Michael Golay & Julie Quinn
Golding-Pollack Family
Pamela Gozzi
Mary Lou Grabowski
Jenifer Grant & Ron Noe
Thomas & Betsy Grant
Ann Gray & Jim Royle
Mr. James Greacen
Michael Greene & Julie Logan
H. Kaye Griffin
Henry Griggs & Jill Abramson
Timothy C. Griswold
Dr. Mary P. Guerrero & Family
Henry & Elizabeth Haff
Mr. & Mrs. Frank Hall
James & Stefanie Hall
Dr. & Mrs. Francis J. Hamilton
Carolee M. Hanbury
Brian Harra & Anne H. Hoy
John Hartman
Jeff & Marisa Hartmann
Gillian Hays
Susan & Lisa Hellen
Mrs. James S. Herman
Susan Hermanson
Rob Hernández
Mr. & Mrs. Hans Jurgen Hess
John A. & Ross W. Higgins
Mrs. Muriel Hinkle
Mrs. Peyton C. Horne
Mary Hughes
Mr. & Mrs. Eric Inzero
Barbara & Ray Jacobsen
Mr. & Mrs. George James
Hope Juckel-Regan
Mrs. Amy Day Kahn
Laila & Daniel Kain
Janet Karp
Diane & Andrew Kaslow
Judith & Sheldon Kaufman
Cheryl Keithan & Todd Bakoledis
Mr. & Mrs. David Kelsey
Sybil Kerrigan
Karen Keser
Mr. & Mrs. Oran Kirkpatrick
Robert P. & Constance D. Knauff
Mr. Frederick C. F. Knowlton
Cynthia L. Konney
Korinne Koskie
Deborah Kotchen
Danielle Kuczowski
Mr. & Mrs. Stephen Kuenkler
Ellen & Gerald Kuroghlian
Carole La Fontaine
Mr. & Mrs. James Larkin
Emily Lassen
Patricia Lavery
George & Kathy Lee
Sally Ann & Dylan Lee
Patricia A. Lenihan
Dr. & Mrs. Thomas Lesnik

Robert & Ronny Levine
Benjamin & Meredith Lewis
Ms. Janet Speirs Littlefield
Mr. & Mrs. Thomas Lombardi
David & Sandy Long
Mary Kay Long & Dennis Unites
Mrs. Vincent J. Longo
Mr. Ernest Lorda &
Ms. Suzanne Derry
Linda Loretz
Jane & Townsend Ludington
John & Gael Lundeen
Diane & Michael Macris
Diane Mallory
Mark & Ellen Maloney
George & Olga Manos
Lilly Markons
Margot & Paul Maroni
Pat Martin & Brad Turley
Ms. Marybeth Marx &
Eric Whittall
Marguerite Mattison
Mr. & Mrs. George Mayer
Mr. Robert B. McCann
Amy & John McCauley
Mr. & Ms. James McGinnis
Marcia P. McGowan
Kathleen McKeough
Dr. Timothy P. McLaughlin &
Marian Kellner
Mr. & Mrs. Fillmore McPherson, III
Melissa Meredith
Mr. & Mrs. Newton S. Merrill
Ms. Cynthia Merritt
Brenda Milkofsky
Ellen & Joel Miller
Lenore Milner
Margaret Milnes &
Matthew Stuart
Alison C. Mitchell
Nancy Mol
Mr. Peter Moore
Sallie & Ted Mundy
Ms. Barbara Nana
Deborah Neely
Ms. Jil Nelson
David & Linda Nolf
Bonnie Nuzum
Suzanne P. &
Anthony M. O'Connor
Jane O'Donnell
Dr. Margaret O'Shea &
Mr. Daniel O'Shea
Nancy & Peter Oates
Dee Osborn
Mr. & Mrs. Jack Ostroff
Mr. & Mrs. Albert Page
Mary Lyn & John Page
Ms. E. Terry Parkinson
Mr. & Mrs. Richard H. Patterson
Judith & Joe Peritz
Mr. Edward G. Perkins
Marie & Frank Pezzlo
Mr. & Mrs. Robert B. Platt
Jerome J. Pollitt &
Susan B. Matheson
Clarissa H. Porter
Anne & John Potter
Wendy & Gary Price
Hannah Purdy
Elizabeth Raisbeck & Zell Steever
Mr. & Mrs. John Read

Ms. Janice M. Reed &
Mr. William O'Malley
Mr. & Mrs. Arthur Reichenbach
Mr. & Mrs. William F. Reichenbach
Mr. & Mrs. Hans Rennhard
Mrs. Joseph Rhodes
Lisa Rhodes
Jean M. Richards
Mr. & Mrs. Frank Roche
Greg & Daneen Roth
Elizabeth Rougny
Sandra & Bill Rueb
Mary Russell
Mr. & Mrs. Philip Sayres
Mr. & Mrs. Ernie Schaefer
Mary Schroeder & Cathy Spencer
P.A. Scott
Lynn & Daniel Sharp
Eileen Shekosky
Ms. Marian Shilstone
Lon & Susan Smith
Mr. & Mrs. Roger Smith
Stacy Smith
Emily Snow
Joanne & Peter Spellane
Nicholas & Joan Squeglia
Mary & Cliff Stehle
Christopher & Rebecca Steiner
Janet Steinmayer
Maureen Sullivan
Jeff Sund & Jane Piro
Mr. Leonardo H. Suzio
Nicholas Thomson
Michael & Karen Tierney
Mr. & Mrs. Robert W. Trainer
Mr. & Mrs. David Tuck
Mr. & Mrs. Howard G. Tuttle, Jr.
Nell & Alex Twining
Mabelle Tyburski
Mr. Matthew Ulricksen
Mr. & Mrs. George Valliere
Pilar Vargas & Sten Vermund
Mr. & Mrs. Howard Veisz
Mercedes Voldstad
Capt. & Mrs. Frank Wadsworth
Mr. & Mrs. John Wagner
Linda Wagner
Lyn Gammill Walker & Tyler Smith
Mr. & Mrs. Robert Walworth
Mr. Richard Wardell
Vicki Wasserman
Mr. & Mrs. David Weber
Gail Welch
Mr. & Mrs. Walter Welsh
Ms. Sheila M. Wertheimer
Ms. Colleen Wetsel
Mary Ellen & Craig White
Mrs. Joseph Whitley
Denis Wickham
Tom & Annie Wilcox
Elisabeth Wilds
Doug & Lucy Wilkinson
Pandy & John Wohler
Barbara Wolf & Andy Schatz
Mr. Kenneth Woodcock
Mrs. George N. Woodworth
Mr. & Mrs. Rick Worcester
Mary-Jo Worthey Warren
Mrs. Roberta Ziegler
Dr. & Mrs. Fred M.H. Ziter, Jr.

HOUSEHOLD

Katie Aberbach & Darren Favello
Mr. & Mrs. Allen Adamczyk
Janet Adams
Roger & Barbara Adams
Ralph & Marlene Adkins
Leslie Alexander
Jeremy Allen
Dr. Luis & Sheila Alonso
Curtis & Jamie Alpha
The Alsback family
Brant Amacher
David & Charlene Amacher
Paul Amendola & Damian Keany
Mr. & Mrs. Robert P. Anderson, Jr.
Thomas Angers &
Timothy VanDaff
Jennifer Antcliff
Thomas & Kathleen Archambault
Robert & Karen Askins
Mr. & Mrs. Irvin K. Atkinson
Gina Atwood
Noelle Avakian
Natasha Avelange
Mr. & Mrs. John Avery
Mr. & Mrs. Tim Baffaro
Francis & Suzette Baird
Linda & Brett Baker
Elizabeth Ballard
Dr. & Mrs. Robert Ballard
Nadina R. Ballestrini
Mr. & Mrs. Sankar Banerji
William & Marsha Bansavage
Bill & Betsy Barry
Harriet & Richard Barry
Lisa Barsumian & Thomas Farrell
Victoria Bartlett
Mr. & Mrs. William A. Bartlett
Mr. & Mrs. Michael Beaudette
Dan & Debbie Beaulieu
Rebekah Beaulieu & Patrick Ford
Brian & Cynthia Beglin
Nicholas Bell
Christine & John Belliveau
Bill & Jody Belluzzi
Edwin Below
Mr. & Mrs. John Benda
Norm & Sally Bender &
Dorothy Moreau
Mr. Joseph Benkovitz
Gary & Frances Bennett
Dr. & Mrs. Michael Betten
Patricia & John Biasuzzi
Mr. & Mrs. Gary Bieniewicz
Joe Bierowski
Marian Bingham & Ken McAdams
Dr. & Mrs. Russell Bingham
Chris Blackshaw
Mr. & Mrs. Robert C. Blake
Tom & Jean Bloom
Mr. & Mrs. Christopher Blossom
Jane Lassen Bobruff
Paula Boehme
Ms. Diana Boehning
Nancy Bollo
Mr. & Mrs. Robert B. Boody
William & Sandra Borland
W. Dawn Boulanger
Janet Bourgault
Jane & Ben Bourn
Jane & Tom Boyd
Mr. & Mrs. Wilson G. Bradford

Kevin & Caryn Brady
 Dr. Irwin Braverman & Marian Wexler
 Sandra & Roger Breunig
 Mr. & Mrs. Donald Brigham
 Charles & Nicoll Brinley
 Elizabeth & Kevin Brouillard
 Maryellen Brousseau
 Mr. & Mrs. David Brown & family
 Dr. & Mrs. James Brown
 Sara Brown
 Anthony Bruno & Susan Jones
 Mr. & Mrs. Stephen Buccheri
 Mr. & Mrs. Wim Budding
 Vanessa Bunnell
 Jonathan & Leah Burdick
 Christina Burke
 Katherine Burke
 Elizabeth & Steven Burnham
 Rob Butterworth & Laurie Giannotti
 Ann Buttrick
 Rolf & Joy Bylan
 Mark Cabell & Megan McMahon
 Marco Cabral
 Matthew Calabrese
 Carolyn Caldwell
 Joe Callaghan & Cindy Griffiths
 Kathy Calnen & Michael McKinley
 Pat & John Campion
 Dr. & Mrs. I.L. Cantner, II
 Helen Cantrell & John Heckman
 Mr. & Mrs. Richard S. Caron
 Tom Carroll
 David & Christine Carter
 Charles & Terese Case
 Susan Struck Cash
 Susan Castellan & Michael Sarlin
 Mr. & Mrs. Chris Cathcart
 Mr. & Mrs. Mike Cathcart
 Jane Cavanaugh & Frank Santoro
 Ms. JoAnna Chapin
 Diana Charnok
 James & Patricia Chiarella
 Thomas & Mary Jane Chicowski
 William & Bobbie Chilton
 Stanton Ching & Melissa Behney
 Mr. Leon Chmielewski
 Catherine & John Christiano
 Ms. Constance Christie
 Carol Christmas & Jan Barber
 Kristen Clark

Julie Clarke
 Mr. & Mrs. Nelson Clayton
 Mrs. Constance S.B. Cliffe, Jr.
 Bruce & Susan Clinton
 Lynda Cmara
 Mr. & Mrs. William J. Cochran
 Janet & Johnny Cody
 Arnold Cohen & Ann Molod
 Jennifer Cohen & James McGee
 Linzee Coleman-Bagge
 David & Merry Coleman
 Constance Coles & W.B. McKeown
 Philip & Clio Coles
 Mr. & Mrs. Francis A. Collins
 Jack Collins & Leah Phelan
 Ms. Linda M. Collins
 Sharon & David Colvin
 Bridget & Andrew Compagno
 Kevin & Amy C. Conley
 Suzanne Connah & Duane Beffa-Negrini
 Nancy Connell
 Ernest & Pamela Conrad
 Mr. & Mrs. David Cook
 Martha Cook
 Benjamin & Alexandra Cooley
 John & Nancy Cooney
 Anthony & Ann Cooper
 Heather & Rich Cooper
 Mrs. Belton A. Copp
 Ellen Cordes & Harry Haskell
 Martine & Mark Coscia
 Beverly Costello
 Virginia Cottrell-Colassadro
 Mr. & Mrs. Robert Crane
 Mr. & Mrs. Creighton
 Mrs. Susan Cronin
 Lis-el Crowley
 Mr. & Mrs. Bruce Cummings
 Denis & Linda Cunningham
 Margaret M. Cunningham
 John & Kristin Curran
 Beverly M. Curry
 Susan Clark & Stephen Curtis
 Mr. & Mrs. David Custodio
 Mr. & Mrs. Samuel H. D'Ambruoso
 Woodbridge & Nancy D'Oench
 Ramzi Dagher
 Kristen Dahl
 Bill & Sandi Dahl

Daily family
 Mr. Peter C. Daitch
 Danielle Danese
 Rise E. Daniels
 Barbara O. David
 Susan & Philip Davis
 Jonathan Day & Nina DeMartini-Day
 Laurie A. Deane
 Ms. Judith Deglin
 Charles Delinks & Eva Cheshire
 Diana & Peter DeLisa
 Ms. Cathy DeMeo & Gregory Futoma
 Laurie & John Deredita
 Dana & Rick Devereux
 Mrs. Anne DeVivo DeMesa
 Diana DeWolfe Carfi
 Catherine & Jim DiMella
 Mr. Phillip Dimond
 Dr. Peter S. Dixon
 Ms. Andrea Donald
 Mr. & Mrs. Leonard Dongweck
 Nena Donovan & Max Strubel
 Elsbeth & Timothy Dowd
 Emilia Dubicki & Myriam Valderrama
 Susan & Ned Dunn, Jr.
 Karl & Mary Beth Eckert
 Mark & Lisa Edmiston
 Dr. & Mrs. Robert L. Edmonstone
 Nicole & Mike English
 Johanna Epperson
 Epstein family
 Pam Erickson
 Katie Scarlett Faile & Erik Faile
 Craig & Sara Fanning
 Mr. & Mrs. Edward P. Farman
 Carolyn Fast & Scott Brown
 Mark & Deborah Faulkner
 Dr. & Mrs. David Fenton
 Ralf Feyl
 Dr. & Mrs. Bryson Filbert
 Jackie Finney & Roger Fish
 Mr. & Mrs. Robert Fisher
 Elaine McNally Fitzpatrick & Laura Fitzpatrick-Nager
 Skip & Britt Flanagan
 Mr. Thomas C. Flanigan
 Arthur & Julia Fleischmann
 Dennis & Michele Flynn
 Mr. & Mrs. Foley

Ronald & Barbara-Jean Fortuna
 Mr. & Mrs. Thomas G. Fowler
 Dr. Elizabeth & Marty Frame
 Jim & Barb Francese
 James & Celia Francis
 Mr. & Mrs. Richard Frank
 Mr. & Mrs. David Frankel
 Wayne & Suzanne Franklin
 Gretchen Frazier
 Mr. William Fredericks
 Mr. & Mrs. Neil Fresk
 Ms. Laurel Friedmann
 Jill & Adam Fritzsche
 Jack & Chip Frost
 Annie Fuller
 Susan & Jim Funk
 Mr. & Mrs. Michael Furgueson
 Bevllynn Gallant
 Guido Garaycochea & Jose Garaycochea-Ulloa
 Linda B. Gardiner & Gerald Raulinaitis
 John & Suzanne Gaskell
 Sean Geary
 Skip & Edie Gengras
 Connie & Kelin Gersick
 Mr. & Mrs. John Giaconia
 Margaret Gibson
 Richard & Katharine Gildersleeve
 Mr. & Mrs. C.P. Gilmore
 Edna Gilstad
 Judith & Ernest Glantz
 Jeffrey Goldwasser
 Jean Golicz
 Mr. Ethan Goller & Ms. Rona Malakoff
 John & Laurie Goodsell
 Dr. & Mrs. Thomas Gotowka
 Lawrence Grab & Brian Fay
 Jerry Graham & Emily Moore
 Frank & Lee Granger
 Richard & Jane D. Grant
 Mrs. Constance Gray & Mr. George Leighton
 Jeff & Heather Graybill
 Paul & Phyllis Greenberg
 Robert & Beverly Gregg
 Mr. & Mrs. Andrew Gregor
 Sandra & David Gregory
 Jim & Jane Griffin
 Ms. Liza Griswold
 Ivan & Judy Grosz

Camp is an amazing artistic experience using many different mediums. The museum is very inspiring to visit & shows stunning examples of different styles.

Gray W.
 Fifth Grade Art Colony Camper
 from Old Lyme, Connecticut



Mr. & Mrs. William H. Grover
Elizabeth & Richard Gruber
Maryann Gryboski &
John Kochiss
Mr. & Mrs. John Grzymkowski
Gerald & Connie Guild
Patricia Guilloton & Alan Laming
Mary Guitar
Francine Gumkowski
Sarah Gworek
Kate & Michael Haggans
Mr. & Mrs. Michael J. Halick
Susan & John Hall
Chuck & Day Halsey
Hildegarde & Hunter Hannum
Peter & Colette Harron
David Hart & Barbara Cleary
Sandy & Mike Hart
Mr. & Mrs. Richard Harter
Rich Hayden & Karin Krochmal
Laura & Bill Haydon
Hayes Kalwat family
Francois & Mary Haymann
John & Johanna R. Haynes
Patricia Hedwall
Ron Heiferman & Judith Miller
Mr. & Ms. John Heiser
Robert & Susan Hellier
Margie Helme-Brother
Kippie Helzel
Mr. & Mrs. David Henderson
Mr. Mundy Hepburn
Richard & Charlotte Herring
Jonathan Heuser &
Nicola Cooney
Taylor & Pam Hicks
Robert & Suzanne Higgins
Ms. Susan Hildebrand
Catherine Hildreth-Reed
Wendolyn Hill & Richard Sutton
Betsy Himmelman
Willa Hoerauf & family
Mr. & Mrs. David Hoffman
Richard & Pat Holloway
Ms. Lisa K. Holmes
Laura Hopkins & John Farmelo
Rivka Horowitz & Harold Pessirilo
Elizabeth Housden & Nye Heron
Donald & Kandra Houston
Sharon & Alan Howell
Mr. & Mrs. Stephen Huber
Robert S. & Ann J. Hudd
Mr. & Mrs. Donald Huppert
Christopher Hurtgen
John Jay & Sally Huss
Christine & Carl Igelbrink
Peter & Susan Immordino
Jacqueline Jaffe &
Rolf Wolfswinkel
Mr. & Mrs. Edward R. James
Matthew & Alexa Jamieson
Tim & Holly Jarrell
Megan Jeffery
John & Emily Johl
Derek M. Johnson
Dr. & Mrs. Gregory Johnson
Lloyd & April-Ann Johnson
Karen & Bruce Jordan
Rev. & Mrs. Steven Jungkeit &
family
William & Keiko Kaiser
Mr. & Mrs. Romi Kaminkas
Steve Kase MD & Terry Klee
Debora Kaszuba-Neary
Ms. Pauline Kathe
Jean Perkins & Ralph Kaufman
Ted & Noemi Kearns
Martha & Bill Kellow
Pat & Bill Kenney
Lisa Kenyon
John & Lesley Keogh
James L. Kerr & Helen Miller
Anastasia King
John & Lana King
Karin & Ken Kline
Douglas Knight & Susan Williams
Emily & Wendelin Knight
Ann & Joseph Koletsky
Mr. & Mrs. John Kopchik
Mark & Liz Kopec
Lee Ann Kornacki
Theodore Kowalski &
Philip Devine
Michael & Nancy Kozlik
Bonnie Kramm
Gerhard & Hanna Krauland
Ms. Pat Kronick
Carol & Bob Kulpa
Michael Kunkel & Henry Cox
Madeline Kwasniewski &
Thomas Donnelly
Peter & Linda Kyriakos
Gary & Susan Labovich
Gail Laferriere
Mr. & Mrs. John LaForce
Mr. & Mrs. Elwood Laforge
Jac Lahav & Nora Leech
Susan & Ted Larson
Rene Laurencot
Dr. & Mrs. Gerald J. Lawrence
Maryann Leach
Mr. & Mrs. Jon Leckerling
Ms. Kathryn Lee
Jan & Gary Lehrman
Garry & Nancy Leonard
Judy & Greg Leonard
Richard & Linda Levene
George Lewis
Mrs. Carol LeWitt &
Bruce Josephy
Ted & Dorita Lieberman
Karen Linder
Sylvia & Martin Lipnick
Robert C. Litts, II & Malamati Litts
Silvia Lobo
Dr. John Locke &
Dr. Cathy Flanagan
Mr. & Mrs. John Lord
Jim & Holly Luce
Peter & Maureen Lutz
Margaret & Fred Lyle
Mr. & Mrs. Chuck Lynch
Kenneth Lynch & Emily Talcott
Michael & Susan Lynch
Edward & Diane Lyons
Mr. & Mrs. Robert MacBain
Nancy MacBride
Donald MacDermid
Jan & Kristin Magnussen
Janet & Richard Mahoney
Karen & Andy Maines
Dr. Frank W. & Pamela A. Maletz
Dr. & Mrs. Samuel Maller
Ron & Julie Malloy
Erica Mann
Ms. Pamela Marks & Mark Peele
Betsy & Chris Marshall
Mr. James R. Marshall, III
Fred & Marie Martin
Glenn & Susan Martineau
Cynthia & Frank Mason
Belinda Massiello
Mr. & Mrs. John Matthiessen
Donna Matulis
Kathleen Maurer & Nann Cooke
Sarah Maxim & Noberto Nuranto
Henry & Joan May
Stuart & Lesley May
Christa Maynard
Blair & Pat McBeth
Mr. & Mrs. Ronald McCutcheon
Daphne & Robert McGill
Phyllis McGrath & Pat Sheehan
Connie McIntyre & Wayne Green
Marion McKenzie & Judy DeVey
Carol & John McKinney
Mr. & Mrs. Andrew McKirdy
Marcia A. McLean &
Peter Lasusa, Jr.
Carolann McNeish
Patricia & George McNevin
David & Susan McNiff
Sheila McPharlin & Walter Pierson
Jim & Judy McQuade
Jean-ellen McSharry &
Christopher Woerner
Patricia & Jeffrey Mead
Richard & Anna-Marie Melchreit
Carl & Fran Mellin
Mr. & Mrs. Nicholas Merola Jr.
Tom & Sue Mickus
Dr. & Mrs. Nancy &
Jennifer Middleton
Robert & Françoise Middleton
Dr. Donald Miller
James Miller & Regan Stacey
Lisa & Martha Miller
Mr. & Mrs. George Mitchell
Mark & Becca Mitchell
Bob & Liz Molloy
Dr. & Mrs. Peter M. Molloy
Hannah Monahan
Mr. Jack Montmeat
Stephen & Susan Moorhead
Jeanine Morgillo
Helen Morrison
Sarah & Thomas Morrison
Robert & Henrietta Mountz
Dr. & Mrs. Thomas Muhlfelder
Elida & Jamie Mullarkey
Kim Muller-Thym
Paula & Kenneth Munson
Mr. & Mrs. Charles M. Murphy, Jr.
Gay Myers & Lance Mayer
Mr. Adam Tamsky &
Ms. Lisa Myerson
Bill & Martha Neale
Michelle Neely & Samuel Yates
Mr. Paul Nelson
Cynthia Nereo Nagle & Bill Nagle
Ramona Neto
Mr. & Mrs. Jonathan Nickerson
Margo Novak & Andy Gifford
Gary Novick, MD &
Barbara Novick
Paula Nowakowski &
Edward Walker
Mr. & Mrs. Robert Nye
Pat & John Nyikos
Natalie O'Brien
Patricia & John O'Brien
Leslie & Art O'Connor
Sabine O'Donnell
Kate & Steve O'Mahony
Dale & Max Okasha
Eric G. & Kathy H. Olsen
Tracie Ortoleva
Brenda Osborn family
Matt & Katie Osborne
Patricia Osborne
RADM & Mrs. John Padgett
Emily Pagliaro
Allen & Rosemary Palmer
Robert & Danielle Paolucci
Zoë S. Pappas
Mrs. Frederick Parker
Jon & Karen Parker
Louis & Muriel Passariello
Dr. & Mrs. Neil Pastel & family
Robert & Kathleen Patterson
Mr. & Mrs. Paulson
Julia Pavone & Mark Dixon
Fred & Kathryn Pechar
Ms. Ocean Pellett
Christian Peltenburg-Brechneff &
Thomas Lovejoy
Lori Pendleton
Chris & Clayton Penniman
Mr. & Mrs. Vincent Peppito
Kay Pere
Mr. & Mrs. Paul Perreten
Mrs. Evelyn Peyton
Mark & Maryellen Phelan
Patricia Phillips
Marlu Picardi
Dr. & Mrs. Edward F. Pinn
Nancy Pinney
Kimberly Platt
Geraldine Pliska
Dr. & Mrs. Benjamin Podurgiel
Elizabeth Popinchalk
Mary Pottorff
Michael & Kristen Powers
Mr. & Mrs. Norman Pratt
Mr. George M. Pruitt, III &
Carol A. Pruitt
Catherine & Rick Puccio
Leslie H. Quarrier &
Peter G. Amos
Don & Charlotte Quigley
Mr. & Mrs. Samuel Quigley
James Quinn & Joan Richards
Theodore & Nancy Raczka
Virginia & Edward Raff
Meg Raftis & Stillman Brown
Dr. & Mrs. William J. Reagan
Ms. Maggie Redfern
Erika Reen
Marilyn & Robert Regan
Linda Reid
Ruth & Charles Reluga
Lisa Reneson
Mr. & Mrs. Bill Revill
Karen Ricciardi & Paul Basilica
Alex Richardson & Liddy Karter
Mr. & Mrs. Mike Richardson
Richard Riddell & Carol Taylor
Mr. & Mrs. William C. Ridgway, III

- Clare & Patrick Robert
Mr. Alec Robertson & Judy Makrianes
Janine Robertson
Joan Rice Robinson & Noah James Rice
Carol Roehr & George Fowler
Mr. & Mrs. Ken Rosen
Frani & Steven Ross
Kyle & Sue Rothery
Catherine & Scott Rottinghaus
Catherine Rowe & Ed DiGiovanni
Bettina Rowlands
Anne & Edward Roy
Ms. Christina Ruales
Mr. & Mrs. Edmund Rubacha
Mr. & Mrs. Damian Rubino
F. Lee Ruck
George E. Ryan
Mr. & Mrs. Michael T. Ryland
Guenther & Joan Salm
Tracey Saloman
Hamilton & Delycia Salsich
Lorraine & Margaret Samela
Christine Sander
Richard & Lisa Sanders
Carrie Sawyer
John & Nancy Scalzi
Nan Scheiber
Mr. & Mrs. John M. Schloss
Bobbi Schmidt
Eleanor Schneider
Nancy & Elias Schwam
Catherine Schwanfelder
Guy Scribner
Mr. & Mrs. Alfred Secondino
Dr. & Mrs. Adam Seidner
Mr. & Mrs. Conrad Ost Seifert, Esq.
Sarah Selke
Gene Sengstock
Mr. Allyn Seymour, Jr.
Mr. Tom Shafer
Mike & Justine Shafnacker
Bill & Meghan Shake
Mr. & Mrs. William Sharp
Charles I. Shaw, III
George & Anna Shaw
Gail A. Shea & Thomas Haggerty
Mr. & Mrs. Thomas C. Sheffield, Jr.
Jen Shellentrop
Bob & Charlotte Shepard
Thomas & Peggy Sheridan
Jim & Penny Sherrard
Mr. & Mrs. Douglas Shomo
Mr. & Mrs. Skip Sibley
Jonathan Silbert & Mary McHale
Pamela & Bruce Simonds
Britt Sinay & Robert Cooper
Jane Siris & Peter Coombs
Mr. Richard Skinner
Richard & Eugenia Slone
Allan F. Small & Patrick McNamara
Ann and Bill Smith
David & Kathleen Smith
Gerda & Robert Smith
Mr. Joseph Smith & Mr. John Lawson
Damon & Patricia Smith
Renee & Tom Smith
- Mr. & Mrs. Robert Smith, Jr.
Victoria Smolkin
Michele Snitkin
Julie Solz
Peter & Elizabeth Sorensen
Jessica Southwick
Mr. & Mrs. Parry Spahr
Robert Speed & Joanne Clark
Whittney Speed
Mr. & Mrs. Speirs
Clark & Cheryl Spencer
Saul & Esther Spigel
Beverly Spink
William A. & Mary Grace Sponn
Jonathan Sproul
Donna Staab & Peter Kulas
Mr. & Mrs. Robert Staab
Charlotte Stanley & Deb Bassett
William & Carmel Staplins
Patricia B. Stark
Lois & Donald Steinman
David & Jane Stettler
Barbara Stevens
Pamela Stevens & Tom Moriarty
The Reverends David & Jane Stickney
Mr. and Mrs. Stephen Stimson
Karen Stockton
Brett & Colleen Stolpe
Mr. & Mrs. J.R. Stone
Christine Strick & Kenneth Mahler
Dr. & Mrs. William T. Stubenbord
Jack & Laurie Sulger
Mr. & Mrs. Anthony Sullivan
Diane Sullivan
Linda Suriyakham
John, Eunice & Emma Sutphen
Elizabeth Sweeney & Michael Parsons
Jan Sweet
Jennifer & Gregory Symonds
Helen Tachkov
Thomas & Nancy Tafuri
Jan & Ted Taigen
Sharon & Frank Tarala
Mr. & Mrs. Cameron Taylor
Craig & Karen Taylor
Rev. Robert & Judy Taylor
Drs. George & Carol Lippia Tenney
Carol Terry
J. Theiler
Deb Thompson
Kristen Thornton
Alan & Sky Todd
Richard J. & Sharon A. Torrenti
Darrell Lacock & Cynthia Townshend Lackock
Joyce & David Trainer
Trainor-LeRoi family
Debbie & Gene Trovato
William & Gail Tubbs
Linda Turner & Gerry Urbanik
Edie Twining
Sharon & Helmut Uldriks
Hans and Barbara Ullstein
Thomas Unger & Ruth Nelson
Dr. & Mrs. Dean Uphoff
Thomas Urban
Suzanne Valade
Alice & Gary Van Deursen
Eddie Vautrain & Suzann Gintoff-Vautrain
Mr. & Mrs. Mark Velez
Kristin & Tom Vernon
Jimena Vignola
Vanessa & Paul Vincenti
Naree Viner
Louise Virgin & Joseph Souhrada
William Vollers & Dawn Hutchins
Joseph & Emma Voytek
Michael & Laurie Walker
Roxann Walters & Barbara Long
Bruce & Beverly Watrous
Irene Watson & Norman Dupuis
Richard & Suzanne Watson
C. Diane Webb
Steve & Gail Weber
Gary & Carol Weed
Chuck & Shelley Wehrly
Judith & Joel Weisman
Elizabeth Weitzman
Dr. Tina West
Shelley Wheeler-Carreiro
Mr. Sidney Whelan & Ms. Patsy McCook
Mr. & Mrs. Eliot White
Frances S. White & Harry B. Evans
Ellen White
Karin Forde Whittemore
Philip Schenck & Maryalice Widness
Lydia Wiernik
Julie Williams
Gail Wilmonen
John & Lynette Wilson
Steve & Kathy Wilson
Nan Winans
John Wirzbicki
Martin Wolman & Nancy Fischbach
Claudia & Steven Workman
Mr. & Mrs. Vagn Worm
Richard Worth & Karen Jeffers
Dmitri Wright
Robert B. Wyllie & Beth M. Sklar
Robert & Susan Yaro
Mr. & Mrs. Wick York
Maureen & Stefan Zavatore
Jessica Zeedyk
Eileen & Scott Zelken
Eileen Zemetis Browne
James & Amy Zinaman
- INDIVIDUAL**
- Mrs. Elizabeth Adams Noyes
Helen M. Aiello
Jane R. Aldieri
Anne-Marie Allen
Kathryn Allen
Katherine Allocco
Patty Almeida
Deborah Ames
Christine Anderson
Mrs. Judith Anderson
Ms. Kathryn Anderson
Dorothy Anselmo
Dr. Roxandra Antoniadis
Kate April
Mrs. James Archambault
Elizabeth Ardolino
Maurice Arfi
Catharine Arnold
Platt Arnold
- Rev. John Ashe
Sally H. Aubrey
Elizabeth Austin
Mr. George Avery
Constance Ayars
Mrs. Elias Babcock
Ms. Carolyn Bacdayan
Geraldine Badalucca
Ms. Mary Beth Baker
Bruce Baratz
Ms. Debera Barnes
Charlotte Barnum
Charlotte P. Barringer
Elizabeth Bartlett
Mrs. Charles E. Baskett
Diane C. Bates
Carol Baugh
Marilyn R. Baumann
Kimberlee Beagle
Suzanne Beatty
Martha Beaudoin
Mrs. Kathleen Bennett
Dr. Dale Bernardoni
Judith Betty
Mrs. Phyllis Bevington
Ms. Phyllis Biederman
Ms. Kimberly Bigger
Lisabeth Billingsley
Bernadette Bimonte-Hackett
Mrs. Tina Birkic
Mrs. John P. Bent, Jr.
Mrs. Diana Blair
Joan Blatterman
Jan Blencowe
Ann Bliss
Karen Bonitz
Annette Bonomo
Mrs. Richard W. Bowman
Ms. Karen Boyle
Ms. Maryann Bracken
Ms. Katie Bradford
Thomas Bradley
Ms. Sandra Bramhall
Troy Bree
Adrienne Brennan
Lee Breslin
Donna Brinckerhoff
Mary Brodhead
Ms. Corinne Brodie
Ms. Linda B. Brown
Linda S. Brown
Ms. Paula Brown
Pauline Brown
Ann Brubaker
Janet Buck
Irene M. Buckley
Norma Bucko
Mary Budzik
Richard V. W. Buel, Jr.
Josephine Bump
Virginia Bundonis
Mr. Allen Burgdorf
Helen Burke
Mary Peirce Burke
Mollie Burton
Karen L. Camlet
Maria Frese Campbell
Ms. Mona Cappuccio
Sharon Carlee
Alisa Carlson
Sharan Carney
Dorothy Carrier

Elizabeth Carter
Brenda Cartmel
Claire O'Toole Cashman
Mrs. Laura Cassidanto
Gill A. Castagna
Ms. Darby Castigliero
Kevin Castleberry
Katherine Catalano
Mrs. Robert Caulfield
Margaret Cawley
Joanne Centola
Paula Chabot
Chris Chamberlain Puffer
Jane Ciaccia
Mrs. Richard Claiborn
Mrs. Francis J. Clark
Jeanne K. Clark
Ms. Molly Clark
Mrs. Virginia Clark
Karen Clarke
Ms. Kay Knight Clarke
Mr. G. Roger Clements
Jeanice Coba
Jane M. Cohen
Mary Colburn
Mrs. Marta Cone
Susan Connors
Clare D. Conover
Alison Conrad
Audrey Conrad
Ms. Patricia Conrad
Deborah Cooney
Jean M. Corrao
Lois Correia
Mrs. John Cory
Mary Anne Cox
Mrs. Ron Cozzolino
Cindy Craft
Gloria Creamer
Toni Criscuolo
Christine Cronin
Virginia C. Currie
Ms. Kathy Curtiss
Sally D'Aquila
Ms. Jane W. D'Arista
Ms. Audrey Irene Daigneault
Rosanne C. Daigneault
Ms. Ellen M. Dalton
Stacey Danielson
Mrs. Marion Dasco
Jill Davidge

The Rev. Patricia F. Davidson
Joan Davies
L.J. Davies
Kathleen Davis
Burl Dawson
Kathleen Deasy
Norma DeGrafft
JoAnne Delle Cave
Elizabeth A. Dempsey
Meg Dempsey
Franca L. DeRosa
Joanne Deschler
Tess Deshefy-Longhi
Mary Devins
Patricia Cyr Devoe
Nina Di Fusco
Ms. Cornelia W. Dickinson
Ms. Jane Dickinson
Victoria Dillingham
Kate Dimancescu
Ms. Elaine Dimpelfeld
Mrs. Catherine N. Doane
Jessica Dobratz
Burgess Dole
Deborah Donovan
Joanne Donovan
Mr. Andrew Drabkin
Ms. Lisa Dragoli
Joanne DuBosque
Charmine Dubrino
Mr. David Dunlop
Ms. June Dunn
Judith G. duPont
Linda Durie
Barbara Dwyer
Cynthia S. Dwyer
Fran Dwyer
Mr. Tyler Eames
Terry Eddy
Elizabeth B. Egan
Mr. Peter Eliel
Rhoda Eligator
Ms. Mel Ellis
Mrs. Janet Eltinge
Jean Ely
Paula Emery
Ann England
Caroline Estabrooks
Leslie Evans
Mr. Robley Evans
Chuck Everett

Angie Falstrom
Nancy Fanslau
Gerald E. Farrell, Jr.
Audrey Fay
Ms. Shirley Feldmann
Mrs. Ethel H. Feltham
Mrs. Lory French-Mullen
Bradford Ficken
Nancy Finch
Maria Fisette
Diana Fiske
Ruthanne Fitzgerald
Barbara Fitzsimmons
Margaret Flesher
Lorraine Florio-Olson
Michele Flowers
Mrs. Joan Flynn
Ann Foley
Julie Ford
Mrs. Arlene Frank
Carl Frano
Mr. Edward S. Frese, Jr.
Mrs. Marcia S. Friedman
Lori Fritzer
Mrs. Janet Funke
Ms. Marcia Gardiner
Anne Garland
Skye Garofalo
Nina Garrett
Ms. Elise Garvin
Mary Gazda
Izola George
Ms. Martha German
Terri Gershenson
Barbara Gilbert
Carol A. Gill
Mrs. Charles M. Gilman
Judi Glickstein
Kirsten Goiangos
Roberta Goldstein
Jane Gordon
Dianne N. Gorrick
Ms. Mimi Gourlay
Jan Grace
Ms. Jeanne Grandchamp
Timothee Graze
Susan Greaves
Ms. Katherine Green
Katherine Green
Ms. Diane Gregory
Mrs. Robert H. Gregory

Dr. Brigitte Griffith
Deborah Griffith
Susan Griggs
Ms. A. Julia Griswold
Laura Griswold
Linda Guenard
Patricia Hagberg
Mrs. Elizabeth Haigis
Carol Hakim
Ms. Marilyn Halbing
Geraldine Hallgren
Ms. Joan Hamrick
Gail Hamsher
Leah Hartman
Elaine Haughton
Laura J. Haurilak
Nancy J. Healy
Mr. Richard Heanue
Ms. Mary-Ellen Hebert
Linda Henriques
Barbara Heuer
B. Joan Hickey
Barbara M. Hilli
Mrs. William Hincks
Ms. Janice Holland
Ashley Holmberg
Margaret C. Holmberg
Laura Hopkins
Barbara Hornung
Mr. Robert Horwitz
Mrs. William J. Hostnik
Renate L. Houchin
Gail M. Hull
Loisann Huntley
Teresa Hurlburt
Patricia Hurley
Joan Hurworth
Leslie Hutchins
MaryAnn Iadarola
Ms. Kathleen Ives
Claire Jackson
Elizabeth Jacobowitz
Melissa Jacobsen
Mr. Robert Jaeger
Mr. Graham K.L. Jeffrey
Mr. Gary Jenkins
Jill Jensen
Emily Jewett
Alexandra Johnson
Mr. Clifford Johnson
Lauretta A. Johnson

We have been to this museum countless times and love it more each time. Here we find intellectual stimulation, visual beauty, new and interesting historical information as well as serenity and reviving tranquility. A wonderful asset to the Connecticut arts scene.

Visitor from West Hartford, Connecticut
Comment Book in the Florence Griswold House



Victoria Johnson
 Nancy Joly
 Ms. Jacqueline Jones
 Jeanette Jones
 Susan Jones
 Mrs. Harriet B. Juli
 Joanne Jurs
 Judith Kaan
 Randie Kahrl
 Leilani V. Kapili
 Ayla Kardestuncer
 Ms. Donna Toth Katan
 Ms. Mary Katsiaficas
 Sara Keaney
 Theresa M. Kemper
 Deborah Kiley
 Nancy King
 Ms. Marilyn B. Kinzel
 Mrs. Mary Ann Kistner
 Jenny Kitsen
 Michael Klimas
 Cheryl Kling
 Mary E. Knight
 Dory Knox
 Irene Koenig
 Mrs. Evelyn Kropp
 Marta Kurczab
 Liz Kurtz
 Robert Kurtz
 Kathy Kuryla
 Joan Lackey
 Mrs. Carolyn Lally
 Ann Lander
 Dianne Langlois
 Saren Langmann
 Judith Lanza
 Pamela Lape
 Mr. David Larson
 Mrs. Elin Larson
 Patricia Leach
 Jennifer Hoffman Lee
 Ms. Suzanne Lemmon
 Mrs. Jack Leonardo
 Rebecca Lerud
 Mrs. Jean Leuchtenburg
 Carolyn Leuze
 Georgie W. Lewis
 Mrs. Caren Linden
 Diane Lindsay
 Gale Loch
 Mr. Robert Lorenz
 Claire Louis
 Richard Loyer
 Judy Lubenow
 Ms. Bunnie Lubs
 Peg MacDonald
 Nora MacNamara
 Mrs. Roland MacNichol
 Teresa Magruder
 Robin Maillett
 Melissa Mainwaring
 Shirley H. Malcarne
 Mr. Donald M. Male
 Nancy Mann
 Ms. Jeanne Rovaldi Manning
 Paul Manning
 Mrs. Dolores Markowicz
 Evelyn Marrison
 Lynne Marshall
 Emily Martens
 Frank Masek

Mary Ellen Massey
 Ms. Patricia Massey
 Linda Mathre
 Ms. Mary Mauro
 Anne H. Maxwell, Ph.D.
 Mary Maynard
 Mary Mazur
 Sally McBee
 Mrs. Lynn McCaffrey
 Alison McCall
 Margaret L. McCarthy
 Joanne McCarty
 Dr. Susan McCawley
 Suzanne McCormack
 Ms. Catherine McCue
 Ms. Phyllis McDowell
 Mrs. Marie McFarlin
 Cassandra McGannon
 Mrs. Elaine McGirr
 Lisabeth McLean Haas
 Christina McLean
 Valnère McLean
 Donald McLellan
 Nancy McLoughlin
 Carol McMahan
 Ms. Diantha McMorro
 Carol Meade
 Joy Merrill
 Amanda Merritt
 Ms. Phyllis Meyer
 Jane Ann Miller
 Mr. John L. Miller
 Donald Millerbernd
 Gunlög Millet
 Ms. Janet Minella-Didier
 Ilse Minkenber
 Beth Moore
 Joan Morach
 Dorothy Morin
 Jacqueline Morrill
 Diantha Morse
 Kathryn Mosey
 Dorothy Mosser
 Ms. Melynda Mudgett
 Jeanne Munnely
 Mrs. Marcia Murphy
 Mrs. Victoria T. Murphy
 Ms. Shirley B. Murtha
 Ms. Shirley Musumeci
 Lois Nadel
 Nancy Najarian
 Karen Nangle
 Katie Newell
 Elaine Newgarden
 Jeanne Nichols
 Ms. Madeleine Nichols
 Mrs. Robert Nielsen
 Judy Niemann
 Sarah Nisenson
 Mary Jo Nosal
 Ms. Victoria Nott
 Jola Nowakowski
 Ms. Constance O'Brien
 Margaret B. O'Brien
 Agnes Q. O'Connor
 Anne H. O'Connor
 Mary S. O'Connor
 Jan O'Sullivan
 Patty Oat
 Mary K. Oberhelman
 Mr. Dam Omohundro
 Shirley Onorato

Ms. Cynthia Opaluch
 Sheila Ostrander
 Paivi Ovaska
 Raymond Padegenis
 Janet Pagano Murphy
 Mr. Charles H. Page
 Mrs. Phyllis Pallett-Hehn
 Mrs. Samuel Parkinson
 Mr. Roger W. Parkman
 Jonathan Parsons
 Deb Paulson
 Mr. Francis J. Pavetti
 Lindamae Peck
 Sheila Peckingham
 Ms. Ethel Peltz
 Alicia Pena
 Dolly Peress
 Sue Ellen Perry
 Rose Petersen
 Susi F. Peterson
 Anne Phelan McCloskey
 Janet M. Philips
 Margaret W. Phillips
 Fran Picchioni
 Carole Pierce
 Anne Bingham Pierson, MD
 Laurie Pilcher
 Betty Pinson
 Brenda Planck
 Mary Ann Pleva
 Maureen Plumleigh
 The Rev. Dr. Wayne D. Pokorny
 Mrs. Ralph J. Polley
 Mrs. Mary Katherine Porter
 Ms. Nancy Porter
 Ellen Potter
 Susan Powers
 Mrs. Albert Pratt
 Ms. Patricia Proctor
 Mrs. Robert Proctor
 Rhonda Pruzinski
 Ken Przybysz
 Ms. Deborah Quinn-Munson
 James Quinn
 Frank Racette
 Glenn Randall
 Judith B. Raymond
 Jean Read
 Arthur Reade
 Barbara Reardon
 Jacqueline Reardon
 Mr. David Redfield
 Carolyn S. Reed
 Dorothy Reed
 Alfred Reeser
 Pamela Reeser
 Louise Reid
 James Reynolds
 Ms. Betty Richards
 Mr. Jonathan Rickard
 Wendy Afton Rieder
 Mr. Michael Riggio
 Ms. Margot Robbins
 Mrs. W.A. Robins
 Lori Robishaw
 Ms. Maureen Rodgers
 Janice Rolfe
 Mary Ann Root
 Mrs. Shirley Rosseau
 Ms. Kristie Rubendunst
 Margaret Rumford
 Sandra Ruth

Patricia B. Ryan
 Ms. Sarah Ryan
 Ms. Nancy A. Salerno
 Susan E. Saltus
 Elizabeth Sandri
 Rita Santostefano
 Claire Sauer
 Faith Saume-Berges
 Ms. Judith Schaaf
 Cindy Schaller
 Lisa Schickler
 Gabriella P. Schlesinger
 Charlotte Schlesselman
 Phoebe Schmidt
 Mrs. Carol Schneider
 Alice E. Schroeder
 Betsy Schwammberger
 Anne Scott
 Patricia Scoville
 Mrs. Robin Sedgwick
 Bobbie Seebeck
 Capt. Chip Seymour
 Ahlam Shalhout
 Ann Shea
 Ms. Elizabeth Sheehan
 Anne B. Sheffield
 Ms. Jeanne Shelburne
 Mrs. Phyllis Shepard-Tambini
 Pamela Shine
 Patricia Shippee
 Janet Shoemaker
 Joseph Sikorski
 Anna Silberberg
 James Silver
 Susan Simler
 Katherine Simmons
 Anne Simpkinson
 Ann P. Simpson
 Priscilla A. Sisk
 Sheila Slattery
 Elaine Smith
 H. Tenney Smith
 Katherine R. Smith
 Marjorie R. Smith
 Nancy Smith
 Mr. Raymond Smith
 Mrs. Sondra A. Smith
 Fay Smolen
 Martha Snyder
 Mr. Thomas Soboleski
 Veronica Soell
 Mary Lou Solomon
 Millicent Solum
 Barbara Spargo
 Mrs. Donna R. Speirs
 Mrs. L. Edwin Sproul
 Mrs. Donna Breen Stamm
 Ms. Karen Stankiewicz
 Cynthia Stannard
 Andrew Stevovich
 Martha Stewart
 Diane Stockton
 Julia Stone
 Eveanne Stouch
 Mr. John Stratton
 Nicholas Streeter
 Mrs. Leroy Strohla, Jr.
 Mrs. Peter Stutts
 Celine Sullivan
 Amy Swan
 Ms. LaRue Swanson
 Mrs. Barbara Swec

Ms. Jean Sweeney
 Linda Talbott
 Ms. Connie Tapper
 Bette D. Taylor
 Cynthia Taylor
 Sally Taylor
 Cheryl Tenin
 Marjorie M. Terry
 Patricia Terry
 Terry Thibodeau
 Mr. Brett Thompson
 Mrs. Michael Thomson
 Joan MacGregor Thorp
 Melody Tierney
 Mrs. Polly Timken
 Brian M. Timura, MD
 Sabina Tompkins
 Joan Tracey
 Barbara S. Traskos
 Jean Valentine
 Lissa Van Dyke
 Dr. Eric Van Rooy
 Maria Varga
 Jean Marie Veroneau
 Frances Violante
 Judith C. Vitali
 Claudia Volano
 Susan von Reichenbach
 Sheila Wacker
 Kathleen Wagner
 Karen Waites
 Mary Waldron
 Joan Wallace
 Nancy Walsh
 David B. Ward
 Tina Waring Ackerman
 Claire Warren
 Mrs. John M. Washburn, Jr.
 Mary W. Wassung
 Melanie Watrous
 Marge Weber
 Mary Lee Weber
 Jerry Weiss
 Sheila Welling
 Royal Werner
 Cathy Weston
 Judith Whitehead
 Judy Rathbun Whitney
 Robin Whitney

Katherine F. Whritner
 Mrs. Mary T. Wibberley
 Ms. Kristen Widham
 Priscilla Bollard Wilder
 Joan H. Wiles
 Janice Wiley
 Barbara Willkens
 Mrs. John Willson
 Adela Wilmerding
 Margaret Wilson
 Rosemarie Wilson
 Alberta Winger
 Ms. Linda Winters
 Jean Wiseman
 Peter Woerner
 Irene Woloszyn Lipchus
 Mr. Daniel Woodhead, III
 Pam Woods
 Cicely Worrall
 Elizabeth Worthington
 Lisa Wurzer
 Carolyn Wynne
 Natalie Yonker
 Susan York
 Dorothy H. Young
 Judith Young
 Ms. Lorraine Yurkewicz
 Mr. Christopher Zajac
 Ms. Betsy Zalaski
 Andrea Zaletta
 Susan Zirlen
 Jane Zirlis
 David F. Zita, Ph.D.
 Deb Zurka
 Virginia Zwelling

BUSINESS PARTNERS

Alforno Trattoria
 All Pro Automotive
 Andre Prost, Inc.
 Andrew Rubenoff: Design
 Andy's Deli & Market
 Ann Lightfoot Inc.
 Arne E. Ahlberg American
 Antique Furniture
 Art Emporium of Old Saybrook
 Artemisia, Inc.
 Arthur Murray Dance Centers
 Artisan Framing & Gallery

Ashlawn Farm Coffee
 Atlantic Building Company, Inc.
 B & L Construction, Inc.
 Baldwin Lawn Furniture &
 Pergolas
 Bee & Thistle Inn
 Benchmark Wealth
 Management, LLC
 Billie Beads
 Black Whale Antiques
 Blackkat Leather
 Block Design Build, LLC
 Bogaert Construction
 Company, Inc.
 Bouvier Insurance
 Bowerbird
 Bromley Mountain
 Burnett's Landscaping, Inc.
 Caliber Computing
 Captain Daniel Packer Inne
 Captain Lord Mansion B&B
 Centerbrook Architects &
 Planners
 Christine Darnell Gardens
 City Bench
 Clark Group
 Coastal Valley Veterinary
 Services, LLC
 Coldwell Banker Residential
 Brokerage, Jodi Strycharz
 Connected Systems, LLC
 Connecticut Women Artists, Inc.
 Creative Concepts by Lisa
 Dagmar's Desserts
 Deep River Jewelry Design
 Delamar Southport
 Dock 11 Cafe
 drinkcaffeine
 East Coast Taco
 Eastern Connecticut
 Symphony Orchestra
 Ekonk Hill Turkey Farm, LLC
 Elizabeth's Cafe &
 Perfect Parties Catering
 Encon Heating, AC & Energy
 Solutions
 Essence Center for Beauty &
 Wellness
 Essex Savings Bank

Essex Winter Series
 Eye Doctors Elgart, Pinn,
 Gordon & Yee
 Faces Aesthetics-Skincare
 Fallon & Wilkinson Furniture
 Conservators
 Fiber-Seal of Western
 Connecticut, Inc.
 Field House Farm
 Flanders Fish Market &
 Restaurant
 Forks & Fingers
 Foxwoods Resort Casino
 Frederick Bonsal
 Seggerman Selections
 Garde Arts Center/Arts Alliance
 George Penniman
 Architects, LLC
 Ginger Druchy, Art Advisory
 Gourmet Galley
 Gowrie Group
 Guilford Savings Bank
 Gulick & Company
 Gull Associates
 Guy's Oil Service
 Hannah Childs Interior Design
 Hanover Square Gallery
 Heavtree of Griswold B&B
 Hill-Stead Museum
 Hitchcock Printing
 Infiltrator Water Technologies
 International Bicycle Tours
 Ivoryton Playhouse
 Jean Callan King Interior Design
 Jeffrey N. Mehler, CFP LLC,
 Financial Planning
 Jonathan Edwards Winery
 Julia Balfour, LLC
 Junkyard Dog Productions
 Kitchings & Potter, LLC
 Knobelsdorff Law Office, LLC
 Laysville Center Hardware
 Lomas Tree Service, LLC
 Lyme Art Association
 MacKinnon Interiors
 Madison Art Cinemas
 Madison Earth Care Landscaping
 & Garden Center
 MAR. Floral & Botanicals

Great Museum. This house became the site of the Old Lyme art colony. The house is fascinating. The artists who roomed there were invited to paint on the different wall and door panels and they are beautiful. The gardens and art museum are great.

**Trip Advisor reviewer
 from Nesconset, New York**



Markel Event Insurance
 Masonicare at Chester Village
 Middlesex Hospital
 Mike Flynn Electric
 Minuteman Press
 Mohegan Sun
 Mr. Jonathan D. Carlisle
 Musical Masterworks, Inc.
 Mystic River Foundry, LLC.
 Mystic River Paintworks, LLC
 Mystic Seaport Museum
 New Britain Museum of
 American Art
 New England Personnel of
 Hartford LLC
 New York City Ballet
 Niantic Plumbing
 Okemo Mountain Resort
 Old Lyme Country Club
 Old Lyme Inn
 Osterman Propane, LLC
 Pampered Pets Grooming
 Salon & Boutique
 Pasta Vita, Inc.
 Pizza Works
 Pough Interiors, LLC
 Pura Vida Pilates
 Reynolds' Garage & Marine
 River Tavern
 River Valley Periodontics &
 Implant Dentistry
 Rob Rivers, The Salon & Spa
 Ruth Hendel Productions
 S.D. Hallahan Housewright, Inc.
 Salon Pure
 Sandy Garvin Fine Art
 Saybrook Veterinary Hospital
 Schwenke Auctioneers
 Seaside Wine & Spirits
 Secor Auto Group
 Shore Discount Liquors
 Shoreline Eye Group
 Shoreline Framing, Artisan
 Studio & Gallery
 Smith Brothers Insurance
 Sonitrol Security Systems
 Spicer Mansion
 Star Computers
 Stonington Country Club
 Studio 33
 Sullivan Lawn Services
 Susan Powell Fine Art
 Tanenbaum Gallery
 The Chocolate Shell
 The Cooley Gallery
 The E List
 The Essex
 The Frame Shop on Wall Street
 The Griswold Inn
 The Hideaway Restaurant & Pub
 The Inn at Stonington
 The Merchants of Old Lyme
 Marketplace
 The Mohegan Tribe
 The Nautical Arts Workshop
 The Noyes School of Rhythm
 The Spa of Essex
 The Williams School
 Topside Canvas &
 Upholstery, Inc.
 Total Design Source, LLC
 Tower Laboratories, Ltd.

Two Sisters Design
 Wall Street Gallery
 Weekapaug Inn
 Well Suited
 Wilber & King
 Wilcox Tree Experts, LLC
 William Pitt Sotheby's
 International Realty-Old Lyme,
 M.J. DeRisio & Roger Parkman
 William Raveis Real Estate,
 Anne Marie Pagli
 William Raveis Real Estate,
 Christine Sennett
 Winter Associates, Auctioneers
 & Appraisers
 Wounded Eagle Farm
 WSHU Public Radio Group
 Zelek Electric Co.

LIBRARY PARTNERS

Acton Public Library
 Atwater Memorial Library
 Avon Free Public Library
 Babcock Library
 Bentley Memorial Library
 Berlin-Peck Memorial Library
 The Bill Memorial Library
 Brainerd Memorial Library
 Brooklyn Town Library
 Burlington Public Library
 Canterbury Public Library
 Canton Public Library
 Case Memorial Library
 Cheshire Public Library
 Chester Public Library
 Cora J. Belden Library
 Cragin Memorial Library
 Cromwell Belden Public Library
 Deep River Public Library
 Douglas Library of Hebron
 Durham Public Library
 E.C. Scranton Memorial Library
 East Granby Public Library
 East Haddam Free Public Library
 East Hampton Public Library
 East Lyme Public Library
 Edward Smith Library
 Essex Library Association
 Fairfield Public Library
 Fairfield Woods Branch Library
 Farmington Library
 Granby Public Library
 Greenwich Library
 Groton Public Library
 Guilford Free Library
 Hall Memorial Library
 Hamden Public Library
 Hartford Public Library
 Harwinton Public Library
 Henry Carter Hull Library
 Ivoryton Library Association
 James Blackstone Memorial
 Library
 Janet Carlson Calvert Library
 Jonathan Trumbull Library
 Killingworth Library
 Ledyard Public Libraries
 Lucy Robbins Welles Library
 Lyme Public Library
 The Manchester Public Library
 Mansfield Public Library
 Meriden Public Library

Middlebury Public Library
 Milford Public Library
 Mystic & Noank Library
 New Britain Public Library
 The Norfolk Library
 North Haven Memorial Library
 North Kingstown Free Library
 Old Lyme-Phoebe Griffin Noyes
 Library
 Oliver Wolcott Library
 Otis Library
 Portland Public Library
 Preston Public Library
 Prosser Public Library
 Public Library of New London
 Rathbun Free Memorial Library
 Rockville Public Library
 Russell Library
 Salem Free Public Library
 Saxton B. Little Free Library
 Simsbury Public Library
 Somers Public Library
 South Windsor Public Library
 Southbury Public Library
 Stratford Library Association
 Sub Base Library, NLON
 Tolland Public Library
 Wallingford Public Library
 Waterford Public Library
 Welles Turner Memorial Library
 West Hartford Public Library
 Westbrook Public Library
 Westerly Public Library
 Weston Public Library
 The Westport Library
 Wethersfield Public Library
 Wheeler Library
 Willimantic Public Library
 Willington Public Library
 Willoughby Wallace Memorial
 Library
 Windsor Public Library
 Woodbridge Town Library
 Woodbury Public Library

VOLUNTEERS

The Museum would like to thank this special group of members who work both in a public role and behind-the-scenes to make a lasting impression on behalf of the Museum.



VOLUNTEER LIAISON

Marilyn Percy

VOLUNTEER RECRUITMENT & PLACEMENT

Linda Ahnert

DOCENTS

Kathleen Valliere, *Chair*

*Docent Council

+Docent Trainer

#CT Art Docent Network Rep.

*+Sue Aberbach

+Linda Ahnert

Rebecca Armstrong

Mary Avery

Kathleen Bennett

Dale Bernardoni

+Deborah H. B. Borton

Corinne Brodie

Maryellen Brousseau

Thea Bussmann

James Chiarella

Patricia Chiarella

Jane Ciaccia

Sharon Colvin

Carolyn Cook

Mary Ellen Cozzolino

Jane Critchett

Anne Czepiel

Sandi Dahl

Kathleen Davis

Nancy Fairchild

Audrey Fay

Michele Flowers

Cynthia Goetz

Katherine Green

Kate Haggans

Gerri Hallgren

Loisann Huntley

Teresa Hurlburt

Janet Karp

*Patsy Kumekawa

Elin Larson

Patricia Lenihan

Lorraine Lincoln Lieberman

+Olga Manos

+Margot Maroni

Linda Mathre

Carol McMahan

Therese Merola

Donald Miller, MD

Nancy Mol

Jeanne Munnely

Cynthia Nereo Nagle

Karen Nangle

Wendy Nielsen

Patricia O'Brien

Patricia Osborne

Ocean Pellett

#Judith Peritz

Jody Perkins

Rose Petersen

Mary Ann Pleva

Jean Read

Barbara Reardon

Kathleen Smith

Emily Snow

*#Thomas Soboleski

Mary Sullivan

*Bette Taylor

Nel Udo

Maria Varga

C. Diane Webb

Mary Ellen White

*Priscilla Bollard Wilder

EDUCATORS

Karen Bonitz

Jane Ciaccia

Patsy Kumekawa

Donald Male

Caryn Mickle

Vincent Peppitto

Mary Sullivan

Colleen Thomas

GARDEN GANG

Sue Aberbach

Susan Anderson

Platt Arnold

Joan Baffaro

Barbara Beal

Diana Charnok

Hyla Cohen

Teddi Curtiss

Amanda Danford

Jane Dickinson

Susan Ferguson

Brad Ficken

Michele Flowers

Christina Gotowka

Katherine Green

Joan Henderson

Claudia Hincks

Karin Kline

Stacia Libby

Jane Ludington

Françoise Middleton

Jeanne Munnely

Lois Nadel

Agnes O'Connor

Bobbie Padgett

Margaret Phillips

Carolyn Reed

Emily Snow

Gay Thorn

Sandy Thurston

Edie Twining

Sheila Wertheimer

Stacie Wolf

Sally Worm

Nohora Yuille

MAIL TEAM

Sue Aberbach

Barbara Beal

Deborah Butler

Susan Cartledge

Amanda Danford

Kate Haggans

Mrs. Theodore R. Hillhouse

Dr. Donald Miller

Ms. Judith Peritz

Mrs. Barbara Preston

Mary Pullen

Lisa Rhodes

Emily Snow

Mary Sullivan

HOSPITALITY COMMITTEE

Gail M. Hull, *Chair*

Joan Baffaro

Carolyn Cook

Ms. Katherine Green

Geraldine Hallgren

Mr. & Mrs. David Henderson

Mr. Eugene Kapusta

Jan Lehrman

Edward & Diane Lyons

Robin Maillett

Dorothy Mosser

Mary S. O'Connor

Ms. Judith Peritz

Susan Shuell

Mr. Thomas Soboleski

Doug & Lucy Wilkinson

MUSEUM INTERNS

Christian Cotter-Garfield,

Graduate UCONN

Sam Stark, Vista Life Innovations

Lydia Wiernik, Valley Regional

High School

ART CAMP VOLUNTEERS

Lucy Filiatreault

Tyler Gomez

Sophia Goodine

Fiona Hufford

Willia Houreoff

Emerson Kaye

Caitlyn Lamy

Sami Olson

CAMP COUNSELORS

Shelby Chadwick

Emma Stanton

Hannah Smith

Hannah Wisner

MARKETING VOLUNTEERS

Julie & Bill Dunbar

Marcia & Jack Fix

Mary & Cliff Stehle

GARDEN LUNCHEON COMMITTEE

Deborah Butler, *Chair*

Susan Cartledge

Elsie Childs

Terry Eddy

Dianne Embree

Jacqueline Jaffe

Dini Mallory

Deborah Moore
Lee Pritchard
Sandy Thurston
Betsey Webster
Sheila Wertheimer

BLOOMS WITH A VIEW: FLORAL DESIGNERS

Alice Luster, *Co-chair*
Sheila Wertheimer, *Co-chair*
Pamela Atkins
Deborah Cooney
Alison Feaster
Ginni Donovan
Matthew Greene
Larry Huzi
Mary Lyons
Trish Manfredi
Margaret MacDonald
Lois Nadel
Bobbie Padgett
Anthony Poitras
Edie Twining

BENEFIT AUCTION STEERING COMMITTEE

Deborah Moore, *Benefit Chair*
Marie Martin, *Auction Co-chair*
Katie Tuttle, *Auction Co-chair*
Tom Schwenke, *Auctioneer*
Mary Ann Besier
Deetsie Bradford
Deborah Butler
Adam C. Calkins
Susan Cartledge
Betsey Cooley
Jeff Cooley
Dianne Embree
Monique Foster
Liz Frankel
Connie Guild
Nancy Hallahan
Dan Hansen
Emily Hildner
Diane Kaslow
Rosemarie Padovano
Ed Parsells
Dennis L. Pough
Lee Pritchard
Dyanne Rafal
Jane Rapport
Lisa Reneson

Lisa Rhodes
Andrew Rubenoff
Judy Schoonmaker
Jodi Strycharz
Sandy Thurston

WEE FAERIE VILLAGE LETTERSBURG JUNCTION: WEE FAERIE HOMESTEADS FROM A TO Z AND 1-2-3

Mary Addison
Jennifer Antcliff
Kelly Bates
Mary Ann Besier
Kurt Besier
Rudi Besier
Chris Blackshaw
Sara Brown
Emerson Bunnell
Vanessa Bunnell
Lillian Calabrese
Dee Dee Charnok
Shelby Chadwick
Lynda Cmara
Teddi Curtiss
Deep River Elementary Students
Cathy DeMeo
Diana deWolf-Carfi
Tom Donnelly
Pam Erikson
Katie Scarlett Faile
Erik Faile
Bevlynn Gallant
Dave Graybill
Haddam-Killingworth High
School Ceramic Students
Steve Hansen
Michael Harney
Betsy Himmelman
Susan Hushin
Dawn Hutchins
Interdistrict School for Arts and
Communication (8th Grade Art
Students)
Megan Jeffery
Lisa Kenyon
John Keogh
Lesley Keogh
Madeline Kwasniewski
Lori Lenz
Rich Lenz
Betsy Marshall

Chris Marshall
Nancy MacBride
Erica Mann
Robert Nielsen
Kay Pere
Dora Pero
David D.J. Rau
Bettina Rowlands
Julie Solz
Christopher Steiner
Kyra Steiner
Rhett Steiner
Billie Tannen
Kristen Thornton
Gay Thorn
Linda Turner
Edie Twining
Gerry Urbanik
John Urbanik
Kristin Vernon
Tom Vernon
Bill Vollers
Jared Welcome
Jessica Zeedyk

VOWELENTERS AT LETTERSBURG JUNCTION

Rebecca Armstrong
Sue Aberbach
Mary Avery
Barbara Beal
Dale Bernardoni
Anne Czepiel
Kay Davis
Michele Flowers
Teresa Hurlburt
Janet Karp
Patricia Lenihan
Lorraine Lieberman
Pat O'Brien
Ocean Pellett
Judy Peritz
Rose Petersen
Emily Snow
Tom Soboleski
Kathy Valliere
Diane Webb
Mary Ellen White
Priscilla Bollard Wilder

MAGIC OF CHRISTMAS

Christmas Shop Buyers

Lee Pritchard
Sandy Thurston

Christmas Shop Decorators

Deborah Butler
Elsie Childs
Anne Cooper
Terry Eddy
Dianne Embree
Marie Martin
Lee Pritchard
Sandy Thurston
Kathy Wilson

Exterior Designers

Sue Aberbach
Barbara Beal
Christina Gotowka
Bobbie Padgett
Carolyn Read
Edie Twining
Sheila Wertheimer
Sally Worm

Fantasy Tree Artists

Ralf Feyl, Friendship, Maine
Jeffrey P'an Glass Studio,
Mystic, CT
Robin Breeding, Old Lyme, CT

Palette Artists

Betsy Barry
Kelly Birkenruth
Ann Marie Coolick
Sam D'Ambruoso
Vivienne Hietala-P'an
Mary O'Connor
Renee Lammers
Paula F. McDonagh
Robert Noreika
Alain J. Picard
Christopher B. Steiner
Dmitri Wright

Griswold House &

Marvelous Mantels

Matthew Greene
David D.J. Rau

Marshfield House

Matthew Greene

BOARD OF TRUSTEES

The Museum's growing family of members helps to continue our tradition of public service to a broad and diverse community, inspiring thousands of children and adults each year.



OFFICERS

David W. Dangremond
President
John E. Noyes
Vice President
Jane Rapport
Vice President
Deborah Butler
Secretary
Andy Baxter
Treasurer
Lee Pritchard
Assistant Treasurer
James Carey
Counsel

TRUSTEES

Jonathan L. Cohen
Dianne Embree
Monique Foster
Charles Hinckley
Paul Holt
Andrea Griffis Inglis
Helen Kriebler
Sally Lawrence
Richard Millard
Deborah Moore
Kathryn Parsons
Barbara Smith
Clinton Standart
Katie Tuttle

CHARTER TRUSTEES

Mary Ann Rumney Besier
Charles T. Clark
Jeffrey W. Cooley
Frank W. (Ted) Hamilton III
Robert D. Webster
George J. Willauer
Carolyn Wakeman

HONORARY TRUSTEES

Maxwell M. Belding
Richard Booth
Wilson G. Bradford
David Hoffman
Lee Jacobus

Hedy Korst
Clement C. Moore II
Marilyn Nelson
Dr. John Niblack
Marilyn Percy
William E. Phillips
Samuel Thorne
Nelson H. White

ADVISORY COUNCIL

Townsend Ludington, *Chair*
Tiffany Bell
Nancy Campbell
Stuart Feld
Donna Fleischer
Rob Hernández
James Lyon
James Matschulat
Harry S. Parker III
Robert Smith, Jr.
Dr. Christopher B. Steiner
Tula Telfair
Abbot Vose
Lyn Gammill Walker
Robert Wilber
David W. Dangremond, *ex officio*
Becky Beaulieu, *ex officio*

STANDING COMMITTEES

Current as of December 31, 2018

Building & Grounds Committee

Lee Pritchard, *Chair*
Rudi Besier
Jonathan Butler
Anne Czepiel
Martin Griswold
Ted Kremer
William Ridgway III
Sandy Thurston
Carolyn Wakeman
Shelia Wertheimer
Robert Wilber

Collections Committee

Helen Kriebler, *Chair*
Mary Ann Besier
Jonathan D. Carlisle

Charles T. Clark
David W. Dangremond,
Chair Emeritus
Hedy Korst
Clement C. Moore II
Carolyn Wakeman
Robert Webster

Committee on Trustees

Carolyn Wakeman, *Chair*
Mary Ann Besier
Jeffrey Cooley
Dianne Embree
Monique Foster
Robert Webster
George Willauer

Development Committee

Jeffrey Cooley, *Chair*
Charles Hinckley
Richard Millard
Deborah Moore
Judith Schoonmaker
Erica Semple
Barbara Smith
Dianne Embree

Executive Committee

David W. Dangremond, *Chair*
Andy Baxter
Deborah Butler
James Carey
John Noyes
Lee Pritchard
Jane Rapport

Investment Committee

Robert Webster, *Co-Chair*
Paul Holt, *Co-Chair*
Andrea Griffis Inglis
Richard Millard
Jeffrey Priest

Membership Committee

Jane Rapport, *Chair*
Sue Aberbach
Thea Bussmann
Deborah Butler

Susan Cartledge
Gail Hull
Andrea Griffis Inglis
Hope Juckel-Regan
Dorothy Mosser
Lisa Rhodes
Eleanor Robinson
Lisa Schickler
Joan Squeglia

Planning Committee

Deborah Moore, *Chair*
Andy Baxter
Jeffrey Cooley
David Dangremond
Sally Lawrence
Curly Lieber
Townsend Ludington
John Noyes
Kathryn Parsons
Lee Pritchard
Robert Webster
George Willauer

Note: The President and Director are *ex officio* of all standing committees except the Committee on Trustees.

AD HOC COMMITTEES

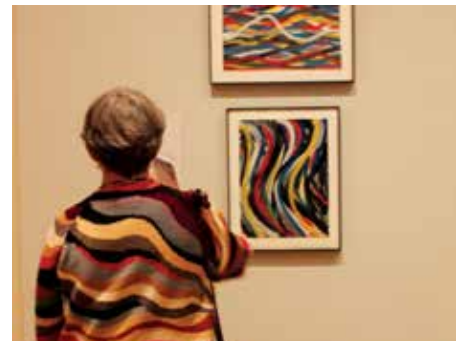
Audit Committee

Jonathan D. Carlisle, *Chair*
Dianne Embree
David W. Dangremond
Andrea Griffis Inglis

Past Presidents' Council

Mary Ann Besier
Wil Bradford
Frank W. (Ted) Hamilton III
George Willauer
Bob Webster
David Dangremond

— 2018 YEARBOOK —





FLORENCE GRISWOLD MUSEUM

Home of American Impressionism

96 Lyme Street, Old Lyme, CT 07371

Discover Art, History, and Nature

JOIN US FOR THE OPENING OF THE

The Robert F. Schumann Artists' Trail

ON MONDAY, JULY 22

Read more about the Trail on pages 16 and 17 and stay tuned for announcements about upcoming programs and special events in conjunction with the Artists' Trail.



THE FLORENCE GRISWOLD

MUSEUM is a non-profit organization dedicated to fostering the understanding of American art, with emphasis on the art, history, and landscape of Connecticut. The Museum is located on twelve acres from Florence Griswold's original estate and includes the Florence Griswold House, the Robert and Nancy Kriebble Gallery, the John and Kelly Bill Hartman Education Center, the John and Dyanne Rafal Landscape Center, the William Chadwick Studio, Marshfield, the Huntley-Brown House, a living landscape, and a collection of American paintings focusing on the art of Connecticut highlighted by the Hartford Steam Boiler Collection. Other collections include New England furniture, decorative arts, artifacts of everyday life, a reference library, and the Lyme Historical Society Archives. Education programs include exhibitions, lectures, trips, interpretive tours, youth Art Colony Camp, and publications. The Museum also owns the Catherine Fehrler House and property in Lyme. The Museum is accredited by the American Alliance of Museums.

ACCESSIBILITY

The campus includes the Hartman Education Center and the Kriebble Gallery, which are fully accessible with specially equipped restrooms. Specially designed pathways make much of the Museum's 12 acres accessible by wheelchair. The historic Florence Griswold House is partially accessible, when accessed using the ramped entrance. The 2nd floor (gallery space) of the House and the interior of the historic Chadwick Studio are not accessible by wheelchair.

STAFF

Rebekah Beaulieu, *Director*
Emily Clark, *Visitor Relations Associate*
Fred Cote, *Director of Finance*
Melissa E. Diaz, *Executive Assistant to the Director*
DeeDee Filiatreault, *Fundraising Office Coordinator and Grant Writer*
Tammi Flynn, *Director of Marketing*
Ted Gaffney, *Facilities Manager*
Joan Greene, *Visitor Relations Associate*
Nathaniel Greene, *Manager of Membership & Individual Giving*
Therese Kus, *Business Manager*
Amy Kurtz Lansing, *Curator*
Matt Marshall, *Director of Visitor Relations & Shop Buyer*
Jenny Parsons, *Assistant Curator*
Cheryl Poirier, *Marketing Associate*
Amber Radden, *Visitor Relations Associate*
David D.J. Rau, *Director of Education & Outreach*
Julie Garvin Riggs, *Manager of Youth Education and Outreach*
Randy Robinson, *Groundskeeper*
Mell Scalzi, *Registrar*
Matthew L. Strekel, *Director of Development*
Linda Turner, *Visitor Relations Associate*

WEBSITE

FlorenceGriswoldMuseum.org

ADMISSION

\$10.00 for adults \$9.00 for seniors (62+) \$8.00 full-time students with I.D. Children 12 and under are free

MUSEUM HOURS

(NEW Seasonal Hours)

April-October

Tuesday through Sunday: 10am to 5pm

November through March

Tuesday through Saturday:

10am to 5pm, and Sunday 1 to 5pm

Chadwick Studio and Rafal Landscape Center open first Saturday in April through October during Museum hours. Grounds open during Museum hours.

CAFÉ FLO

May 1 to October 27, Tuesdays through Sundays, 11:30am to 2:30 pm

OFFICE HOURS

Monday through Friday, 9am to 5pm

Telephone: 860/434-5542

Fax: 860/434-9778

CLOSED

Mondays, New Year's Day, Easter, Fourth of July, Thanksgiving, and Christmas Day

DIRECTIONS

Located in the heart of the historic district of Old Lyme, at 96 Lyme Street, exit 70 off Interstate 95. Accessible parking available.

MISSION STATEMENT

The mission of the Florence Griswold Museum is to foster the understanding of American Art, with emphasis on the art, history, and landscape of Connecticut.